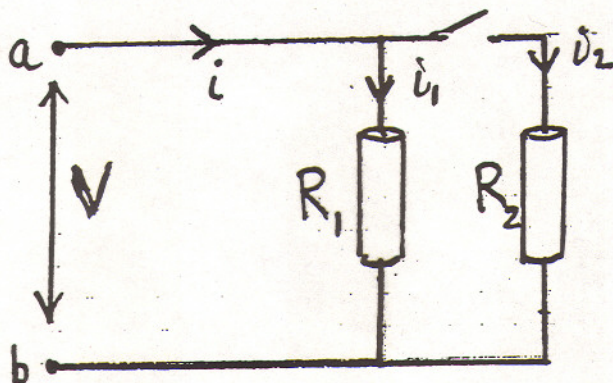


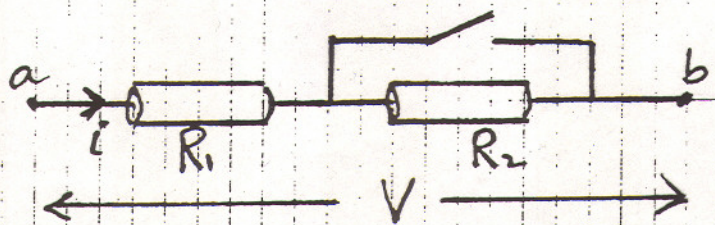
1. In the circuit below, a constant potential difference V is maintained between points a and b by a battery. Two identical resistors $R_1 = R_2$ are connected as shown. Initially the switch is closed.



When the switch is opened, the current through R_1 :

- (A) increases (B) decreases (C) stays the same

2. Now the resistors are connected differently, with the same potential difference V maintained between points a and b . The switch is initially open.



When the switch is closed, the current through R_1 :

- (A) increases (B) decreases (C) stays the same