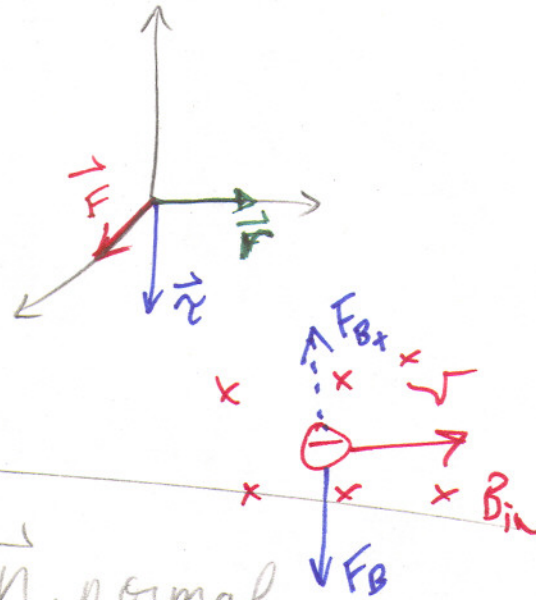


# Right Hand Rules PH 41B

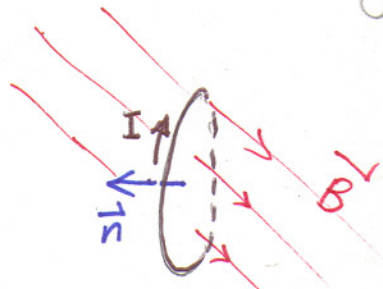
① Cross-product

$$\vec{\tau} = \vec{r} \times \vec{F}$$

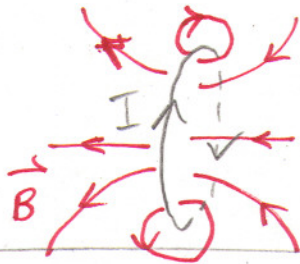
$$\vec{F}_B = q\vec{v} \times \vec{B}$$



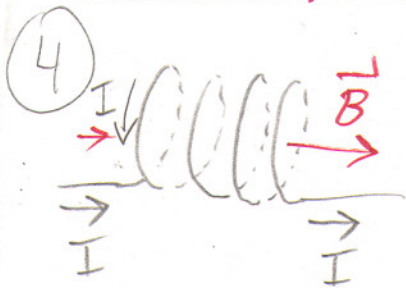
② to find direction of  $\vec{n}$ , normal



③



to find  $\vec{B}$  lines from  $I$



curl straight rt. hand rule  
to get  $\vec{B}$  from  $I$   
or  
vice versa