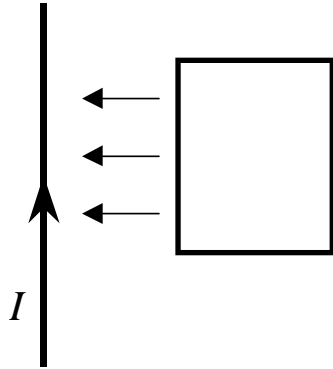


A long, straight wire carries a steady current  $I$ , upward in the diagram below. A rectangular conducting loop lies in the plane of the wire with the orientation shown below. Suppose the loop is pushed toward the wire in the indicated direction. The induced current in the loop is



- A. clockwise.
- B. counterclockwise.
- C. zero.
- D. need more information to determine.