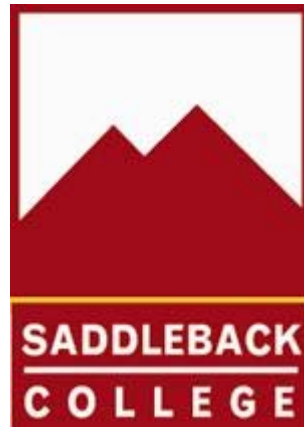


**Saddleback College  
Program Review for Music  
Department**



**Submitted on October 15, 2008**

## Table of Contents

Team Members and Approval Page.....	3
Program Review Checklist .....	4
Program Overview.....	5
Review Report.....	8
Needs Assessment.....	11
Appendices.....	14

## Program Review Team Members and Approvals

Program Review Team Chair:

Norman Weston

Program Review Team Members:

Scott Farthing  
Terry Newman  
Joey Sellers  
Rebecca Rollins  
Carmen Dominguez

Approvals:

---

Division Dean

---

Program Review Chair

---

Academic Senate President

---

Vice President of Instruction

## Program Review Checklist

Date Completed	Action
02/01/2006	Contact Program Review Chair for orientation
02/01/2007	Form Program Review Team
3/01/2006	Gather documents (Org Chart/Staffing Profile/SLO Assessment Forms/Data Sets)
03/15/2006	Solicit input from faculty and students
03/021/2006	Determine if additional research is needed
3/31/2006	Contact College Research Analyst if necessary
06/01/06-10/15/2008	Write Program Review report
10/15/2008	Submit report to Dean and Program Review Chair for approval
	Report submitted to Academic Senate for approval
	Report submitted to Office of Instruction for approval
	Report submitted to College President and the Office of Institutional Effectiveness
	Report posted to the IE web site
	Presentation to the Planning and Budget Committee

## Section I: Program Overview

**The Mission of the Program and its Link to the College's Mission and Goals:** The Mission of the Saddleback College Music Program is “to develop the highest level of creative expression and critical understanding in our students by fostering, through both teaching and performance, the knowledge of cultural, technical, theoretical, emotional and spiritual aspects of music.”

The music program at Saddleback College is a comprehensive program that fulfills many of the objectives stated in the college's mission, vision and goals. It is a program that prepares the transfer student for the rigors of upper divisional work in music. For students whose primary goal is the attainment of an AA degree, we offer and require a comprehensive two year program of specific college level classes. We teach numerous students who are undergoing new career training or are expanding and improving their professional skills. Many of our students are “lifelong” learners who are taking music classes not for professional reasons, but for their own creative and intellectual enrichment. Finally, we offer a broad range of general education classes for the non-music major needing to fulfill core requirements

**Historical Background and Unique Characteristics of the Program:** The primary emphasis of the music department is the music major program. This is a rigorous program of classes and performance requirements that is designed for three types of students: students whose ultimate goal is to transfer to a four-year institution as a music major, students whose ultimate goal is an A.A. degree from Saddleback College and students who are already professionals in the field who are looking to further expand their skills and knowledge. Unlike many major programs at Saddleback College, where students merely have to take any 18 units within a particular discipline to obtain an A.A. degree, music students are required to take 24-29 units of core music major classes that include 2 semesters each of the following: private instruction on their instrument or voice, theory, musicianship, class piano, ensemble, and history. Furthermore, music students whose ultimate goal is to transfer to a 4-year program in music end up taking additional classes in performance, theory and/or history in preparation for the rigors of the 4-year degree.

Because music is a performance art, music students at Saddleback College are expected maintain an active performance life. All majors are required to perform in one of our ensembles, and public performance is a required component of their private instrumental or vocal instruction. The Applied Music program is the means by which our majors get individual instruction on their voice or instrument and is the cornerstone of the major program.

Music is an academic area that many people choose to either return to or explore for the first time as the demands of employment and family diminish. “Lifelong” learners populate all of our courses, from history courses to performance courses to theory courses. This is a part of the college mission that the music department fulfills especially well and one that we embrace wholeheartedly.

Many of our classes fulfill the fine arts and humanities and requirement for an A.A. or A.S. degree, the cultural diversity requirement for an A.A. or A.S. degree and various general education transfer requirements. We offer a wide variety of these general education classes, from Music Appreciation to Jazz History, World Music, Rock History as well as a class entitled Women, Music and Society. These classes are perennially popular and we are able to offer multiple sections of general education classes every semester with consistently high enrollments for the most part.

**Progress Since the Last Program Review:** As the last Program Review was in the early 1990’s (to the best of anyone’s recollection) there has been considerable progress since the last Program Review. There have been three new faculty members hired, four retirements, and entire programs, such as the jazz program, the instrumental program, the choral program, and the theory and composition program, have been restructured or in some cases (jazz, for example) resuscitated.

**Current Strengths, Opportunities, and Challenges:** The strength of any department lies in its faculty and the Saddleback College music faculty, which consists of 6 full time instructors and about 25 part time instructors, is truly outstanding. Our faculty includes published composers, active performers, and nationally recognized educators and each of our full time faculty members maintains an active musical life outside of their teaching responsibilities. The philosophy behind the hiring of the Saddleback College music department faculty is the same that one finds at the finest of music programs, and that is the idea of specialization. Music consists of diverse, yet connected, areas of study that each requires specialized preparation. So while a theory instructor might have a working knowledge of piano performance, or an instrumental conductor might have a working knowledge of jazz performance, they may not have the extensive skills necessary to teach in those areas. For our full time faculty we have endeavored to find and hire the most exceptional teachers in the following specialized areas: instrumental music, piano, history, jazz, choral and vocal music, and theory. In addition we have one full time faculty member whose primary teaching responsibilities are general education courses, and whose classes are consistently among the most popular in the entire college.

A serious music major program simply can’t exist without providing individual instruction to its students, and one of the problems that the music department currently faces is finding a means of expanding our Applied Music program, which as it currently stands can only accommodate 34 students due to funding

limitations. Students must audition to get into the program and currently we do not have enough spaces for all qualified students that audition.

Finally, the Music Department at Saddleback College continues to be one of the most visible programs at the college, proving to be an invaluable resource in terms of raising the community's awareness of Saddleback College and the excellence of its students, faculty and programs in general. Not only are our faculty members all active, public musicians, but we provide a full concert schedule of student and faculty concerts both on campus and in the community.

## Section II: Review Report

**Faculty and Staff:** The Music department currently consists of six full time faculty members, one of whom serves as department chair, twenty-three part time faculty members (an amount that varies from semester to semester), one full time senior lab technician, and one 30/hr per week staff accompanist. Four of the full time faculty members are responsible for an entire discipline: jazz, vocal, instrumental, theory and composition; one has taken over two disciplines: piano and history; and the remaining faculty member is largely responsible for teaching general education classes.

**Curriculum and Instruction:** The Department of Music offers an AA degree in music, with which most of our students use to transfer to four-year institutions. We also offer general education and basic skills classes, including four through distance or web based instruction: Music Appreciation, History of Rock, Music Basics, and History of Jazz.. These two categories of classes support very clearly our goal of supporting students who need to acquire the necessary skills with which to pursue four year degrees, and embrace the performance, artistic and vocational skills of our community member students.

The following methods are used in evaluating the effectiveness of our instruction:

- Juries
- Performances
- Music Meetings
- Class Evaluations
- Student Learning Outcomes
- Exams
- Quizzes
- Concert Attendance/Ticket Sales
- Guest Artist/Master Class Feedback
- Specialized conference attendance in our respective disciplines

Student Learning Outcomes are used in the following areas;

Juries  
Performance  
Classroom Assessment

Our successes in SLO implementations occur naturally in that juries and performances inherently serve as a method of assessment and are an excellent gauge of periodic growth. Codifying assessments of this nature into a language or format that follows the rubric of SLO patterning is sometimes problematic.

It is difficult to codify a given SLO format for some of our performance classes. We offer such a wide variety of classes, even within the umbrella of “performance” (Symphonic Orchestra, Wind Ensemble, Choral, Solo Voice, Solo Instrumental, Chamber Music, Large Jazz Ensemble, Jazz Combos, Composition, Music Theatre) These are only the performance oriented classes and do not include our general education offerings, piano classes, vocal classes, theory classes, guitar classes.

As a two-year institution, we sometimes feel that we cannot adequately prepare the students for transferability given the level in which they enter the program. For instance, our SLO regarding sight-reading in instruction (and evaluated at juries) needed to be abandoned that we might focus on other more realistically achieved goals for our level of student.

Our strengths in the area of instruction are that all music professors employed are dedicated professional musicians who are experts in their respective disciplines as well as excellent teachers, including two recent Saddleback College Teachers of the Year (Norman Weston, Penny Foster). Our disciplines all complement one another, and there is excellent communication amongst the faculty regarding our students.

**Student Success:** The appendix includes extensive data sets regarding student success in the music classes from 2002 through 2005. Rather than reiterate here all of the data included in those sets, we will simply highlight the important information relating to our overall program as well as our music major program. The overall retention rate for the entire music program is a fairly consistent 85%-90% with a success rate between 53% and 69%. The summer semester, which consists entirely of general education classes, has the lowest success rate consistently. Our music majors are in general more motivated students, and their success rate is substantially higher, between 68% and 84%. The retention rate consistently remains above 90%.

**Facilities, Technical Infrastructure, and Resources:** There is a single music department building that contains two large classrooms that double as rehearsal spaces for our large ensembles, another dedicated classroom that also doubles as a rehearsal space, 15 music practice rooms, 7 faculty offices (including one for the staff accompanist) - 5 of which double as rehearsal and/or teaching space for labs and classes- a room for class piano, a recording studio and an office for our lab technician which also doubles as storage space for instruments and music. We have two performance venues, the McKinney Theatre and Fine Arts Room 101. We also make use of the Studio Theatre on occasion. There are some dedicated resources in the college library for the student including a somewhat extensive CD and DVD collection, and a small number of musical scores. The music history and theory holdings are quite out of date.

**Service, Community Outreach, and Economic Development:** The music department is one of the most visible departments on campus, due to our numerous public performances, and is, to many in the community, perhaps the most noteworthy public face of the college. This current semester there are 21 productions being presented by the music department, including four free concerts offered as part of our Thursday noon concert series. In spite of the fact that we perform an unmatched and invaluable role in the community outreach of the college, our public performances are largely unfunded by the college, and we are forced to rely on fundraising, ticket sales and ASG funds.

In addition, we have extensive professional relations with such groups as the Music Teachers Association of California, Primavera Strings, and the Pacific Symphony Youth Wind Ensemble. These groups often use our facilities for events, concerts and rehearsals, providing yet another important link to the musical community.

## Section III: Needs Assessment

**Human Resource Needs:** With the retirement of Nakyong Chai in 1998, the music department lost the faculty in charge of coordinating the piano and keyboard program. Since that time, this role has been filled by Dr. Rebecca Rollins, who is also responsible for the oversight of the music history program. In addition, there is no faculty member who specializes in music technology, which is a rapidly changing and extremely important area in the 21st century music world. Therefore our most immediate faculty staffing need is to replace the retirement of Mrs. Chai with a full time position that combines an expertise in keyboard as well as a thorough knowledge of music technology.

In the area of classified staffing, three positions are needed. We desperately need another **Lab Technician**. The amount of manual labor that is required of our current technician, which involves stage set up and moving heavy instruments, chairs and stands for the music department's many concerts and rehearsals, is extremely physically demanding and our current technician has nobody to help him with this labor. As most of the concerts and rehearsals are in the evening, he must also take time out of his daily duties to prepare the evening classes, as well as put in many overtime hours to record and stage manage all of the weekend and evening concerts. The music department used to have a part time lab technician to assist with the evening rehearsals and concerts, but when he resigned over 15 years ago, the position was never filled by the college.

A Music Department **Librarian** is desperately needed to organize, catalogue, secure, and file the music for the Wind Ensemble, Orchestra, Women's Camerata, Saddleback Choir, Day Choir, Saddleback Big Band, Jazz Lab Ensemble, and Chamber Music. In combination, these ensembles generate thousands of pages of music that do not currently have any codified system of organization. A Librarian and dedicated facilities are needed to adequately catalogue and store the music generated by the Music Department.

The Music Department needs an **Ensemble Manager**. This would be a new classified position. The music department has eight music ensembles, with over 200 students in rehearsal each week. These groups meet Monday thru Friday. Their combined performances total over 100 per academic year. They perform prior to the start of the school year at Fall in-service functions and conclude their performance schedule at commencement activities.

Even though these groups focus on a wide variety of musical genres there are similar needs that each group must have met in order to provide a successful teaching and learning experience. Unifying features for each ensemble include recruiting, auditions, and numerous performance-related requirements.

An ensemble manager would work with faculty conductors and directors to manage all aspects of the daily operations for the following music ensembles

1. Wind Ensemble
2. Symphony Orchestra
3. Day Choir
4. Women's Camerata
5. Saddleback Choir
6. Saddleback Big Band
7. Jazz Lab Band
8. Jazz Combos (8)
9. Chamber Music

**Instructional Needs:** Our curriculum as it is currently configured supports our mission statement and goals well; nonetheless the following are classes that we should consider adding:

Music Preparation (contingent on midi-piano lab)  
Music as a Business  
Jazz Vocal Techniques  
Jazz Theory  
Film and Television Scoring

Also, the funding for our Applied Music program must be restructured to allow for more students to be admitted to the program (we turn students away every semester) and for increased instruction time for those students accepted into the program.

**Research Needs:** Instrumental and Vocal ensembles often need music re-arranged or re-orchestrated to suit specific instrumentation needs. Funding for engraving, extraction and music preparation is necessary to ensure that students have music in a timely fashion.

Also, we often need access to Grove Online Dictionary for program notes and educational enhancement. Ideally, the college would fund an annual subscription for at least two computers in the Music Department.

**Technical, Equipment and Other Resource Needs:** We need to completely rebuild the two pianos in our piano lesson space. Currently, we do not have adequate money to maintain the pianos that we own. The pianos are consistently out of tune and in need of re-voicing, hammer work, and other ongoing maintenance needs. The funding provided for piano maintenance is completely inadequate, leaving our pianos in embarrassingly bad shape. This is not fair to our students and reflects very poorly on the college when we have visiting ensembles and students.

We will need new pianos for the new music performance venue when it is built. Approximately 14 upright pianos for the practice rooms, two grand pianos for two rehearsal rooms, and two upright pianos for the other two rehearsal rooms. We will need one Steinway D for the main performance stage.

Finally, we need to convert the piano lab into a computer/midi lab so that we can offer vocational classes in music preparation, film and television scoring, and music business classes.

**Facilities Needs:** There are several components within this section that deserve attention as they impact the nature and mission of the Music Department within Saddleback College.

Performance Venue: While the McKinney Theatre has a world-class lighting and sound design, which makes the space highly desirable as a performing venue for both the Theatre and Musical Theatre productions, as well as the Guest Artist series, the reality is there is never adequate time for the music ensembles or music performances to occur in the space. It is acoustically unsuited to any of our music department ensembles. Andy Morgan from the New York company Artec Consultants flatly stated that there is no possible way to reconfigure the McKinney Theatre or FA 101 and 103 to be acoustically appropriate for our ensembles. A new Theatre dedicated to music performance is needed.

It would seem that in order for the Music Department to fulfill its mission and its potential, there must be adequate performance facilities for departmental usage. This space should be acoustically and aesthetically designed primarily for music performance and have appropriate availability for our students to use.

Rehearsal Space and Classroom Availability: There does not appear to be adequate classroom or rehearsal space for the current size and direction of the Music Department. While there are two fine rehearsal areas (FA 101 and 103) for the instrumental and vocal ensembles, these spaces also have to take on the duties of housing recital venues, large class space, and multi-purpose meetings. There needs to be consideration for expanding both the number and size of the lecture classrooms so that the rehearsal areas, the space that is so critical for performance success, can be kept to their original purpose.

Storage: As with many programs on campus, the Music Department has grown in many areas that were not expected in the original concept of the facility. Perhaps the greatest sign of this is the lack of storage space for equipment and music. Currently ever available inch has been filled way beyond capacity. This would even include hallways, offices, practice rooms, and closets. With the growing jazz, instrumental, and vocal programs, the need for materials storage for these groups grows with every new ensemble.

Associate Faculty Office Space: Because the Associate Faculty is such an important and vital part of the Music Program it is very important that adequate space can be created for the Associate Faculty to be able to conduct appropriate office hours, tutor students, have computer access, and even have a place to keep their personal items. Currently, they have no place to conduct the business of their classes that is so important to both student success, but faculty morale as well.

Technology: Particularly in the study of music, there seems to always be the opportunity to incorporate more technology into the classroom. Through the usage of music downloading devices (iPod), the 21st century student has greater access to more and more music and listening opportunities. There are also many opportunities that would certainly improve our educational goals with regards to both music writing and recording software. With the current facilities, these technological goals are not as attainable.

As music educators, we have a responsibility to present to our students different ways of viewing the world of music, and have the tools to show them. The potential of music technology is to allow the exploration of new areas of music in both the mechanical and the creative sense. The tools of music technology are being created at an ever growing pace. New and innovative hardware, software, instruments and media are being developed everyday that allow musicians and technicians the ability do things that were previously only dreamed about. We have a great opportunity for our instructors and staff to catch onto this wave, and harness its creative power to ignite the spark of enthusiasm in our students. This requires that we invest in this new technology (hardware, software, instruments and media) that is the “industry standard” and “state-of-the-art”. It is a disservice and reflects badly on the college to offer obsolete, out of date and worn out equipment to our students. It is the desire of the Music Department that our students have the chance learn on equipment that is current, up to date, industry standard and state-of-the-art. Thereby increasing their abilities, and securing the same knowledge and skills enjoyed by students at other competing institutions of higher learning that already have this equipment.

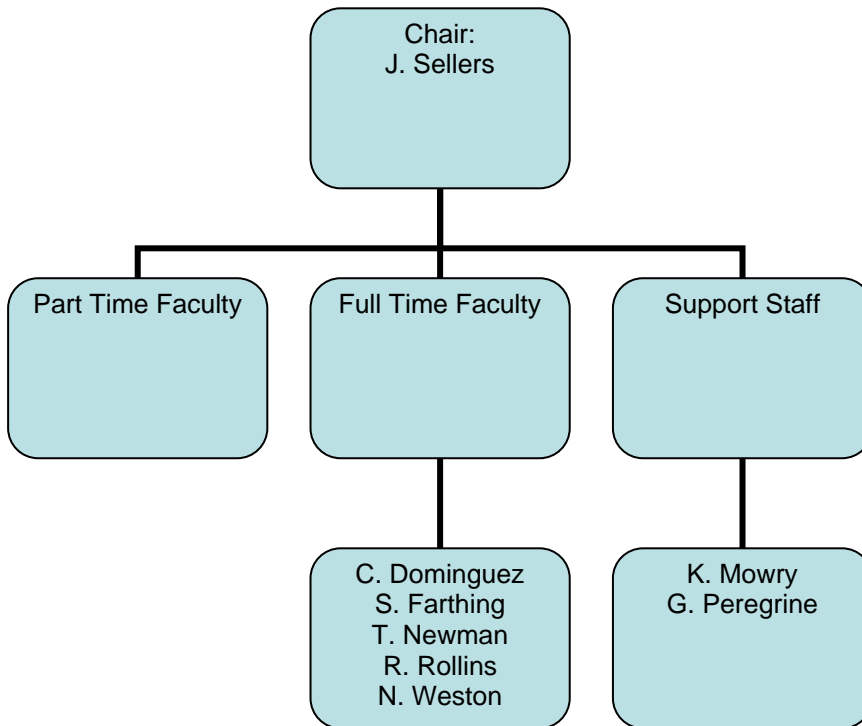
Library Holdings: While the amount of online resources for music is plentiful, there are many things within the discipline of music that need to be available in a library setting. While there are many good holdings available in the Saddleback library, there is always opportunity for further collection expansion. Especially in the area of musical scores in all genres, the library holdings could use further improvement. A large part of a student’s musical education comes from their ability to peruse many scores, study the physical score, and be able to examine works of similar and influencing composers. Therefore a music library should always be changing, expanding, and developing.

Other Resources: The reality in a viable college music program is that they are expensive to run. Unlike most educational programs, music requires many levels of equipment, administrative support, technical support, storage, extensive facilities, and a highly faceted array of monetary support that will continue running the music program as a whole, as well as the many subsets within the department. The problem arises that as each program becomes increasingly successful, the modes by which they were originally supported must change in and of themselves. The facilities must grow along with the programs in order to keep the programs, at the very least, at their current levels. Excellent facilities help attract excellent students. Saddleback College needs to make the commitment to assist in maintaining the current facilities as well as begin a process to explore possibilities in expanding the physical space of the Music department.

**Marketing and Outreach Needs:** Our biggest obstacle in relation to outreach and marketing is the lack of upkeep of our facilities and equipment. The groups, such as the MTAC, that use our facilities for events, have to deal with practice rooms in desperate need of renovation, pianos that are out of tune and/or need to be replaced, and inadequate performance space. We have recently had groups move events that have been held at Saddleback College for years to other campuses because of the state of our facilities. This is unacceptable. As stated above, we need, at a minimum, two pianos rebuilt and sufficient funds to maintain the pianos we own. Other than a new acoustically appropriate theatre, this is perhaps our most pressing need in the music department.

## Section IV: Appendices

### Program Organizational Chart:



**Five-Year Program Staffing Profile:**

Position	Staffing The 2004	levels Previous 2005	for Five 2006	Each Years 2007	Of 2008	% Change From Year 1 to Year 5
Administration						
Bargaining Classified Staff FT	1	1	1	1	1	0%
Bargaining Classified Staff PT						
Non-bargaining Classified Staff FT						
Non-bargaining Classified Staff PT						
Student Workers						
Faculty FT	5	6	6	6	6	+ 20%
Faculty PT	24	24	26	23	23	- 4%

**SLO Assessment Forms:**

All SLO assessment forms are on file

**Data Sets:**

**Music Program - History & Appreciation  
Course and Section Count by Term and Year**

	Fall				Summer				Spring			
	2002	2003	2004	2005	2002	2003	2004	2005	2002	2003	2004	2005
	Section Count	Section Count	Section Count	Section Count	Section Count	Section Count	Section Count	Section Count	Section Count	Section Count	Section Count	Section Count
MUS 20	7	6	6	6	3	2	3	3	7	7	6	6
MUS 23	1	1	1	1	0	0	0	0	1	1	1	1
MUS 24	1	1	1	1	0	1	0	0	2	1	1	1
MUS 25	1	1	1	1	0	0	0	0	0	0	0	0
MUS 26	0	0	0	0	0	0	0	0	0	1	1	1
MUS 27	2	3	2	2	0	1	1	1	1	2	3	2
MUS 28	4	4	4	4	1	0	1	1	4	4	4	4
MUS 29	2	0	1	0	0	0	0	0	1	1	1	1
<b>Total</b>	<b>18</b>	<b>16</b>	<b>16</b>	<b>15</b>	<b>4</b>	<b>4</b>	<b>5</b>	<b>5</b>	<b>16</b>	<b>17</b>	<b>17</b>	<b>16</b>

**Music Program - History & Appreciation  
C1 Headcount by Course/Term/Year**

	Fall				Summer				Spring			
	2002	2003	2004	2005	2002	2003	2004	2005	2002	2003	2004	2005
	C1 Headcount	C1 Headcount	C1 Headcount	C1 Headcount	C1 Headcount	C1 Headcount	C1 Headcount	C1 Headcount	C1 Headcount	C1 Headcount	C1 Headcount	C1 Headcount
MUS 20	199	176	164	192	92	40	62	71	171	176	170	141
MUS 23	34	40	27	26	.	.	.	.	26	31	26	25
MUS 24	50	54	47	48	.	39	.	.	38	42	47	34
MUS 25	12	11	14	16	.	.	.	.	.	.	.	.
MUS 26	.	.	.	.	.	.	.	.	.	14	14	15
MUS 27	48	78	37	43	.	38	0	0	41	54	36	44
MUS 28	214	207	231	223	0	.	0	0	224	194	215	233
MUS 29	1	.	3	.	.	.	.	.	12	7	3	4
<b>Total</b>	<b>558</b>	<b>566</b>	<b>523</b>	<b>548</b>	<b>92</b>	<b>117</b>	<b>62</b>	<b>71</b>	<b>512</b>	<b>518</b>	<b>511</b>	<b>496</b>

**Music Program - History & Appreciation**  
**End of Term Enrollment by Course/Term/Year**

	Fall				Summer				Spring			
	2002	2003	2004	2005	2002	2003	2004	2005	2002	2003	2004	2005
	End of Term Enrollment	End of Term Enrollment	End of Term Enrollment	End of Term Enrollment	End of Term Enrollment	End of Term Enrollment	End of Term Enrollment	End of Term Enrollment	End of Term Enrollment	End of Term Enrollment	End of Term Enrollment	End of Term Enrollment
MUS 20	297	274	247	272	172	175	138	151	247	259	244	244
MUS 23	34	40	27	26	0	0	0	0	26	31	26	25
MUS 24	50	54	47	48	0	40	0	0	40	42	47	34
MUS 25	13	11	14	16	0	0	0	0	0	0	0	0
MUS 26	0	0	0	0	0	0	0	0	0	14	14	15
MUS 27	49	126	73	83	0	41	57	49	41	54	81	87
MUS 28	342	341	369	339	111	0	106	123	350	305	337	356
MUS 29	2	0	3	0	0	0	0	0	12	7	3	4
Total	787	846	780	784	283	256	301	323	716	712	752	765

**Music Program - History & Appreciation**  
**Courses by Grade/Success/Retention**

		Grades										success	retention	
		A	B	C	CR	D	F	I	NC	W	XX	Total	Percent	Percent
		Count	Count	Count	Count	Count	Count	Count	Count	Count	Count	Count		
2002	Spring	116	123	159	8	25	74	5	1	125	80	716	56.7%	82.5%
	Summer	47	44	24	2	4	32	2	0	46	82	283	41.3%	83.7%
	Fall	123	171	168	2	44	94	4	1	105	75	787	59.0%	86.7%
2003	Spring	164	151	118	1	35	81	5	0	91	66	712	61.0%	87.2%
	Summer	64	43	24	5	6	30	3	2	27	52	256	53.1%	89.5%
	Fall	158	167	154	4	44	98	7	4	106	104	846	57.1%	87.5%
2004	Spring	120	156	162	3	40	79	3	3	105	81	752	58.6%	86.0%
	Summer	50	41	43	5	8	28	1	2	32	91	301	46.2%	89.4%
	Fall	124	148	178	3	40	67	7	2	121	90	780	58.1%	84.5%
2005	Spring	120	158	156	4	46	75	4	2	109	91	765	57.3%	85.8%
	Summer	35	72	47	5	19	16	1	0	40	88	323	49.2%	87.6%
	Fall	98	170	188	1	52	86	16	1	96	76	784	58.3%	87.8%

Grade XX = None of the above/unknown.

Success Rate: Percent of students successful in courses out of total enrolled in courses (RP Group, 1996).

The success rate is calculated by dividing the numerator (number of students duplicated with A, B, C, CR) by the denominator (number of students with A, B, C, D

Retention Rate: Percent of students retained in courses out of total students enrolled in courses (RP Group, 1996).

The retention rate is calculated by dividing the numerator (number of students duplicated with A, B, C, D, F, CR, NC, I, XX) by the denominator (number of student NC, W, I, XX).

**Music Program - History & Appreciation  
All Courses by Grade/Success/Retention**

		Grades											success	retention
		A	B	C	CR	D	F	I	NC	W	XX	Total		
		Count	Count	Count	Count	Count	Count	Count	Count	Count	Count	Count	Percent	Percent
MUS 20	2002 Spring	45	44	32	1	8	36	2	1	45	33	247	49.4%	81.8%
	Summe	33	37	10	1	0	14	2	0	28	47	172	47.1%	83.7%
	Fall	44	66	52	1	15	42	3	0	39	35	297	54.9%	86.9%
	2003 Spring	68	51	30	1	4	38	3	0	35	29	259	57.9%	86.5%
	Summe	33	33	15	4	3	18	3	2	22	42	175	48.6%	87.4%
	Fall	44	59	34	4	15	40	5	2	32	39	274	51.5%	88.3%
	2004 Spring	32	58	49	1	6	29	1	2	45	21	244	57.4%	81.6%
	Summe	31	24	22	4	2	15	1	1	11	27	138	58.7%	92.0%
	Fall	33	43	39	1	19	25	2	1	42	42	247	47.0%	83.0%
2005	Spring	41	51	38	2	18	23	1	0	39	31	244	54.1%	84.0%
	Summe	18	43	15	2	9	8	0	0	17	39	151	51.7%	88.7%
	Fall	48	59	47	0	22	18	15	0	37	26	272	56.6%	86.4%
MUS 23	2002 Spring	2	6	3	0	1	2	0	0	2	10	26	42.3%	92.3%
	Fall	11	9	2	0	0	3	0	0	5	4	34	64.7%	85.3%
	2003 Spring	14	6	0	0	3	3	0	0	3	2	31	64.5%	90.3%
	Fall	12	11	3	0	2	4	0	0	5	3	40	65.0%	87.5%
	2004 Spring	6	9	3	0	0	3	0	0	4	1	26	69.2%	84.6%
	Fall	8	7	2	0	1	4	0	1	3	1	27	63.0%	88.9%
	2005 Spring	7	7	6	0	2	3	0	0	0	0	25	80.0%	100.0%
	Fall	4	12	4	0	1	3	0	0	2	0	26	76.9%	92.3%
	MUS 24	2002 Spring	14	9	5	0	2	2	1	0	4	3	40	70.0%
Fall		21	11	3	1	0	12	0	0	2	0	50	72.0%	96.0%
2003 Spring		18	7	5	0	0	6	1	0	5	0	42	71.4%	88.1%
Summe		6	7	6	0	2	8	0	0	4	7	40	47.5%	90.0%
Fall		23	17	3	0	1	5	0	0	3	2	54	79.6%	94.4%
2004 Spring		10	18	9	0	0	7	0	0	2	1	47	78.7%	95.7%
Fall		9	18	10	0	0	0	0	0	9	1	47	78.7%	80.9%
2005 Spring		5	9	8	0	3	2	0	1	4	2	34	64.7%	88.2%
Fall		5	11	14	0	3	11	0	0	2	2	48	62.5%	95.8%

Grade XX = None of the above/unknown.

Success Rate: Percent of students successful in courses out of total enrolled in courses (RP Group, 1996).

The success rate is calculated by dividing the numerator (number of students duplicated with A, B, C, CR) by the denominator (number of students

Retention Rate: Percent of students retained in courses out of total students enrolled in courses (RP Group, 1996).

The retention rate is calculated by dividing the numerator (number of students duplicated with A, B, C, D, F, CR, NC, I\*, XX) by the denominator

**Music Program - History & Appreciation  
All Courses by Grade/Success/Retention**

			Grades										success	retention	
			A	B	C	CR	D	F	I	NC	W	XX	Total		
			Count	Count	Count	Count	Count	Count	Count	Count	Count	Count	Count	Percent	Percent
MUS 25	2002	Fall	1	4	1	0	0	0	0	0	6	1	13	46.2%	53.8%
	2003	Fall	1	5	2	0	1	1	0	0	0	1	11	72.7%	100.0%
	2004	Fall	3	3	0	1	0	1	1	0	4	1	14	50.0%	71.4%
	2005	Fall	2	4	2	0	1	5	0	0	1	1	16	50.0%	93.8%
MUS 26	2003	Spring	4	5	2	0	0	2	0	0	1	0	14	78.6%	92.9%
	2004	Spring	5	2	0	0	0	2	0	0	3	2	14	50.0%	78.6%
	2005	Spring	4	0	6	1	0	2	1	0	1	0	15	73.3%	93.3%
MUS 27	2002	Spring	8	3	10	2	0	4	0	0	11	3	41	56.1%	73.2%
		Fall	7	19	11	0	2	5	0	0	1	4	49	75.5%	98.0%
	2003	Spring	9	14	11	0	7	6	0	0	5	2	54	63.0%	90.7%
		Summe	25	3	3	1	1	4	0	0	1	3	41	78.0%	97.6%
		Fall	26	12	24	0	4	19	2	2	22	15	126	49.2%	82.5%
	2004	Spring	22	14	5	1	1	8	1	1	9	19	81	51.9%	88.9%
		Summe	9	10	5	1	1	6	0	1	11	13	57	43.9%	80.7%
		Fall	14	12	12	1	0	15	0	0	4	15	73	53.4%	94.5%
	2005	Spring	15	24	10	0	5	12	0	0	8	13	87	56.3%	90.8%
		Summe	5	13	4	2	6	2	0	0	8	9	49	49.0%	83.7%
Fall		11	21	17	1	3	15	0	1	6	8	83	60.2%	92.8%	

Grade XX = None of the above/unknown.

Success Rate: Percent of students successful in courses out of total enrolled in courses (RP Group, 1996).

The success rate is calculated by dividing the numerator (number of students duplicated with A, B, C, CR) by the denominator (number of students w

Retention Rate: Percent of students retained in courses out of total students enrolled in courses (RP Group, 1996).

The retention rate is calculated by dividing the numerator (number of students duplicated with A, B, C, D, F, CR, NC, I\*, XX) by the denominator (n

**Music Program - History & Appreciation  
All Courses by Grade/Success/Retention**

		Grades											success	retention
		A	B	C	CR	D	F	I	NC	W	XX	Total		
		Count	Count	Count	Count	Count	Count	Count	Count	Count	Count	Count	Percent	Percent
MUS 28	2002 Spring	43	60	107	3	13	29	2	0	62	31	350	60.9%	82.3%
	Summe	14	7	14	1	4	18	0	0	18	35	111	32.4%	83.8%
	Fall	38	62	98	0	27	32	1	1	52	31	342	57.9%	84.8%
	2003 Spring	49	66	70	0	21	24	1	0	41	33	305	60.7%	86.6%
	Fall	52	63	88	0	21	29	0	0	44	44	341	59.5%	87.1%
	2004 Spring	43	55	96	1	33	30	1	0	41	37	337	57.9%	87.8%
	Summe	10	7	16	0	5	7	0	0	10	51	106	31.1%	90.6%
	Fall	57	65	114	0	20	22	3	0	58	30	369	64.0%	84.3%
	2005 Spring	45	66	88	1	18	33	2	1	57	45	356	56.2%	84.0%
Summe	12	16	28	1	4	6	1	0	15	40	123	46.3%	87.8%	
Fall	28	63	104	0	22	34	1	0	48	39	339	57.5%	85.8%	
MUS 29	2002 Spring	4	1	2	2	1	1	0	0	1	0	12	75.0%	91.7%
	Fall	1	0	1	0	0	0	0	0	0	0	2	100.0%	100.0%
	2003 Spring	2	2	0	0	0	2	0	0	1	0	7	57.1%	85.7%
	2004 Spring	2	0	0	0	0	0	0	0	1	0	3	66.7%	66.7%
	Fall	0	0	1	0	0	0	1	0	1	0	3	33.3%	66.7%
	2005 Spring	3	1	0	0	0	0	0	0	0	0	4	100.0%	100.0%

Grade XX = None of the above/unknown.

Success Rate: Percent of students successful in courses out of total enrolled in courses (RP Group, 1996).

The success rate is calculated by dividing the numerator (number of students duplicated with A, B, C, CR) by the denominator (number of students with A, B,

Retention Rate: Percent of students retained in courses out of total students enrolled in courses (RP Group, 1996).

The retention rate is calculated by dividing the numerator (number of students duplicated with A, B, C, D, F, CR, NC, I\*, XX) by the denominator (number of

**Music Program - History & Appreciation  
Gender by Year/Term  
Duplicated Headcount**

		F		M		X		Total	
		Count	Row %	Count	Row %	Count	Row %	Count	Row %
2002	Spring	321	44.8%	395	55.2%	0	.0%	716	100.0%
	Summer	159	56.2%	124	43.8%	0	.0%	283	100.0%
	Fall	343	43.6%	444	56.4%	0	.0%	787	100.0%
2003	Spring	324	45.5%	388	54.5%	0	.0%	712	100.0%
	Summer	120	46.9%	136	53.1%	0	.0%	256	100.0%
	Fall	368	43.5%	477	56.4%	1	.1%	846	100.0%
2004	Spring	332	44.1%	420	55.9%	0	.0%	752	100.0%
	Summer	177	58.8%	124	41.2%	0	.0%	301	100.0%
	Fall	314	40.3%	465	59.6%	1	.1%	780	100.0%
2005	Spring	349	45.6%	416	54.4%	0	.0%	765	100.0%
	Summer	180	55.7%	143	44.3%	0	.0%	323	100.0%
	Fall	296	37.8%	488	62.2%	0	.0%	784	100.0%

**Music Program - History & Appreciation by Zip Code  
Duplicated Headcount**

		Saddleback Zip		Irvine Zip		Out of District or Missing		Total	
		Count	Row %	Count	Row %	Count	Row %	Count	Row %
2002	Spring	645	90.1%	13	1.8%	58	8.1%	716	100.0%
	Summer	254	89.8%	6	2.1%	23	8.1%	283	100.0%
	Fall	707	89.8%	29	3.7%	51	6.5%	787	100.0%
2003	Spring	640	89.9%	17	2.4%	55	7.7%	712	100.0%
	Summer	219	85.5%	16	6.3%	21	8.2%	256	100.0%
	Fall	760	89.8%	19	2.2%	67	7.9%	846	100.0%
2004	Spring	686	91.2%	21	2.8%	45	6.0%	752	100.0%
	Summer	260	86.4%	7	2.3%	34	11.3%	301	100.0%
	Fall	711	91.2%	15	1.9%	54	6.9%	780	100.0%
2005	Spring	682	89.2%	23	3.0%	60	7.8%	765	100.0%
	Summer	283	87.6%	16	5.0%	24	7.4%	323	100.0%
	Fall	707	90.2%	16	2.0%	61	7.8%	784	100.0%

**Music Program - History & Appreciation  
Ethnicity by Year/Term  
Duplicated Headcount**

		Ethnic Groups																	
		Asian		African American		Hispanic		American Indian/Alaskan Native		Other		Pacific Islander		White		Unknown		Total	
		Count	Row %	Count	Row %	Count	Row %	Count	Row %	Count	Row %	Count	Row %	Count	Row %	Count	Row %	Count	Row %
2002	Spring	47	6.6%	9	1.3%	85	11.9%	1	.1%	5	.7%	3	.4%	527	73.6%	39	5.4%	716	100.0%
	Summer	20	7.1%	7	2.5%	34	12.0%	2	.7%	3	1.1%	0	.0%	196	69.3%	21	7.4%	283	100.0%
	Fall	54	6.9%	14	1.8%	76	9.7%	5	.6%	2	.3%	9	1.1%	575	73.1%	52	6.6%	787	100.0%
2003	Spring	49	6.9%	11	1.5%	80	11.2%	9	1.3%	12	1.7%	6	.8%	492	69.1%	53	7.4%	712	100.0%
	Summer	24	9.4%	9	3.5%	26	10.2%	2	.8%	6	2.3%	1	.4%	171	66.8%	17	6.6%	256	100.0%
	Fall	66	7.8%	18	2.1%	87	10.3%	3	.4%	15	1.8%	12	1.4%	580	68.6%	65	7.7%	846	100.0%
2004	Spring	56	7.4%	15	2.0%	95	12.6%	6	.8%	5	.7%	12	1.6%	516	68.6%	47	6.3%	752	100.0%
	Summer	26	8.6%	5	1.7%	43	14.3%	0	.0%	12	4.0%	2	.7%	181	60.1%	32	10.6%	301	100.0%
	Fall	49	6.3%	13	1.7%	89	11.4%	4	.5%	10	1.3%	11	1.4%	545	69.9%	59	7.6%	780	100.0%
2005	Spring	56	7.3%	11	1.4%	83	10.8%	3	.4%	13	1.7%	5	.7%	533	69.7%	61	8.0%	765	100.0%
	Summer	27	8.4%	9	2.8%	42	13.0%	1	.3%	2	.6%	4	1.2%	208	64.4%	30	9.3%	323	100.0%
	Fall	54	6.9%	31	4.0%	86	11.0%	9	1.1%	1	.1%	7	.9%	534	68.1%	62	7.9%	784	100.0%

**Music Program - History & Appreciation  
Educational Goals by Year/Term  
Duplicated Headcount**

	2002				2003				2004				2005			
	Spring		Fall		Spring		Fall		Spring		Fall		Spring		Fall	
	Count	Column %	Count	Column %	Count	Column %	Count	Column %	Count	Column %	Count	Column %	Count	Column %	Count	Column %
AA/AS and transf	252	35.2%	284	36.1%	261	36.7%	317	37.5%	292	38.8%	307	39.4%	293	38.3%	324	41.3%
Transfer w/o AA/	92	12.8%	110	14.0%	98	13.8%	113	13.4%	106	14.1%	90	11.5%	114	14.9%	115	14.7%
AA/AS w/o transf	7	1.0%	7	.9%	4	.6%	1	.1%	4	.5%	4	.5%	3	.4%	4	.5%
2-yr Voc. w/o tra	13	1.8%	13	1.7%	12	1.7%	22	2.6%	14	1.9%	23	2.9%	19	2.5%	20	2.6%
Voc. certif. w/o tr	107	14.9%	107	13.6%	93	13.1%	128	15.1%	111	14.8%	105	13.5%	108	14.1%	98	12.5%
Discover interests	48	6.7%	62	7.9%	39	5.5%	38	4.5%	34	4.5%	37	4.7%	31	4.1%	34	4.3%
Acquire job skills	47	6.6%	42	5.3%	41	5.8%	40	4.7%	41	5.5%	40	5.1%	45	5.9%	39	5.0%
Update job skills	12	1.7%	17	2.2%	10	1.4%	18	2.1%	10	1.3%	10	1.3%	12	1.6%	10	1.3%
Maintain cert. or l	4	.6%	3	.4%	4	.6%	1	.1%	2	.3%	4	.5%	4	.5%	3	.4%
Ed. development	17	2.4%	17	2.2%	28	3.9%	31	3.7%	23	3.1%	27	3.5%	28	3.7%	22	2.8%
Basic Skills	0	.0%	2	.3%	3	.4%	4	.5%	3	.4%	2	.3%	2	.3%	2	.3%
HS or GED	9	1.3%	7	.9%	11	1.5%	15	1.8%	12	1.6%	15	1.9%	12	1.6%	18	2.3%
Undecided	108	15.1%	115	14.6%	108	15.2%	118	13.9%	100	13.3%	116	14.9%	94	12.3%	95	12.1%
Unknown	0	.0%	1	.1%	0	.0%	0	.0%	0	.0%	0	.0%	0	.0%	0	.0%
<b>Total</b>	<b>716</b>	<b>100.0%</b>	<b>787</b>	<b>100.0%</b>	<b>712</b>	<b>100.0%</b>	<b>846</b>	<b>100.0%</b>	<b>752</b>	<b>100.0%</b>	<b>780</b>	<b>100.0%</b>	<b>765</b>	<b>100.0%</b>	<b>784</b>	<b>100.0%</b>

**Music Program - Music Majors  
Course and Section Count by Term and Year**

	Fall				Spring			
	2002	2003	2004	2005	2002	2003	2004	2005
	Section Count	Section Count	Section Count	Section Count	Section Count	Section Count	Section Count	Section Count
MUS 10	1	2	2	2	1	1	1	1
MUS 11	1	1	1	1	1	1	1	1
MUS 12	1	1	1	1	0	0	0	0
MUS 14	0	0	0	1	0	0	1	0
MUS 15	0	0	0	0	1	2	1	2
MUS 25	1	1	1	1	0	0	0	0
MUS 26	0	0	0	0	0	1	1	1
MUS 50	1	1	1	1	1	1	1	1
MUS 51	1	1	1	1	1	1	1	1
MUS 52	1	1	2	1	1	1	1	1
MUS 92	0	1	1	1	0	0	1	1
MUS 93	0	1	1	1	0	0	1	1
Total	7	10	11	11	6	8	10	10

**Music Program - Music Majors  
C1 Headcount by Course/Term/Year**

	Fall				Spring			
	2002	2003	2004	2005	2002	2003	2004	2005
	C1 Headcount	C1 Headcount	C1 Headcount	C1 Headcount	C1 Headcount	C1 Headcount	C1 Headcount	C1 Headcount
MUS 10	35	56	41	43	18	33	24	45
MUS 11	11	16	11	21	12	16	25	24
MUS 12	8	11	14	16	.	.	.	.
MUS 14	.	.	.	12	.	.	16	.
MUS 15	.	.	.	.	26	20	29	23
MUS 25	12	11	14	16	.	.	.	.
MUS 26	.	.	.	.	.	14	14	15
MUS 50	0	0	0	0	0	0	0	0
MUS 51	0	0	0	0	0	0	0	0
MUS 52	0	0	0	0	0	0	0	0
MUS 92	.	0	0	0	.	.	0	0
MUS 93	.	0	0	0	.	.	0	0
Total	66	94	80	108	56	83	108	107

**Music Program - Music Majors**  
**End of Term Enrollment by Course/Term/Year**

	Fall				Spring			
	2002	2003	2004	2005	2002	2003	2004	2005
	End of Term Enrollment	End of Term Enrollment	End of Term Enrollment	End of Term Enrollment	End of Term Enrollment	End of Term Enrollment	End of Term Enrollment	End of Term Enrollment
MUS 10	35	56	41	43	18	33	24	45
MUS 11	11	17	11	21	12	16	25	24
MUS 12	8	11	14	16	0	0	0	0
MUS 14	0	0	0	12	0	0	16	0
MUS 15	0	0	0	0	26	22	29	24
MUS 25	13	11	14	16	0	0	0	0
MUS 26	0	0	0	0	0	14	14	15
MUS 50	7	11	19	19	6	12	15	17
MUS 51	9	9	6	3	13	10	9	7
MUS 52	11	7	8	10	7	5	5	6
MUS 92	0	19	21	22	0	0	20	28
MUS 93	0	11	7	11	0	0	12	11
Total	94	152	141	173	82	112	169	177

**Music Program - Music Majors  
Courses by Grade/Success/Retention**

		Grades										success	retention	
		A	B	C	CR	D	F	I	NC	W	XX	Total		
		Count	Count	Count	Count	Count	Count	Count	Count	Count	Count	Count	Percent	Percent
2002	Spring	54	9	4	2	2	3	2	0	3	3	82	84.1%	96.3%
	Fall	36	20	14	0	5	0	1	0	9	9	94	74.5%	90.4%
2003	Spring	52	28	6	2	3	6	3	0	9	3	112	78.6%	92.0%
	Fall	57	35	17	3	4	8	10	0	11	7	152	73.7%	92.8%
2004	Spring	82	18	12	3	5	28	1	0	13	7	169	68.0%	92.3%
	Fall	53	31	8	2	7	9	5	2	13	11	141	66.7%	90.8%
2005	Spring	61	36	26	3	5	13	5	0	19	9	177	71.2%	89.3%
	Fall	54	45	20	4	13	10	7	1	13	6	173	71.1%	92.5%

Grade XX = None of the above/unknown.

Success Rate: Percent of students successful in courses out of total enrolled in courses (RP Group, 1996).

The success rate is calculated by dividing the numerator (number of students duplicated with A, B, C, CR) by the denominator (number of students duplicated with A, B, C, CR, XX)

Retention Rate: Percent of students retained in courses out of total students enrolled in courses (RP Group, 1996).

The retention rate is calculated by dividing the numerator (number of students duplicated with A, B, C, D, F, CR, NC, I, XX) by the denominator (number of students duplicated with A, B, C, D, F, CR, NC, W, I, XX).

**Music Program - Music Majors  
All Courses by Grade/Success/Retention**

			Grades									success	retention	
			A	B	C	CR	D	F	I	W	XX	Total		
			Count	Count	Count	Count	Count	Count	Count	Count	Count	Count	Percent	Percent
MUS 25	2002	Fall	1	4	1	0	0	0	0	6	1	13	46.2%	53.8%
	2003	Fall	1	5	2	0	1	1	0	0	1	11	72.7%	100.0%
	2004	Fall	3	3	0	1	0	1	1	4	1	14	50.0%	71.4%
	2005	Fall	2	4	2	0	1	5	0	1	1	16	50.0%	93.8%
MUS 26	2003	Spring	4	5	2	0	0	2	0	1	0	14	78.6%	92.9%
	2004	Spring	5	2	0	0	0	2	0	3	2	14	50.0%	78.6%
	2005	Spring	4	0	6	1	0	2	1	1	0	15	73.3%	93.3%

Grade XX = None of the above/unknown.

Success Rate: Percent of students successful in courses out of total enrolled in courses (RP Group, 1996).

The success rate is calculated by dividing the numerator (number of students duplicated with A, B, C, CR) by the denominator (number of students duplicated with A, B, C, CR, XX)

Retention Rate: Percent of students retained in courses out of total students enrolled in courses (RP Group, 1996).

The retention rate is calculated by dividing the numerator (number of students duplicated with A, B, C, D, F, CR, NC, I, XX) by the denominator (number of students duplicated with A, B, C, D, F, CR, NC, W, I, XX).

**Music Program - Music Majors  
All Courses by Grade/Success/Retention**

		Grades								success	retention	
		A	B	C	CR	D	F	XX	Total			
		Count	Count	Count	Count	Count	Count	Count	Count	Percent	Percent	
MUS 50	2002	Spring	5	0	1	0	0	0	0	6	100.0%	100.0%
		Fall	6	1	0	0	0	0	0	7	100.0%	100.0%
	2003	Spring	7	5	0	0	0	0	0	12	100.0%	100.0%
		Fall	7	3	1	0	0	0	0	11	100.0%	100.0%
	2004	Spring	11	0	2	0	0	2	0	15	86.7%	100.0%
		Fall	9	6	1	0	0	2	1	19	84.2%	100.0%
	2005	Spring	9	6	1	0	1	0	0	17	94.1%	100.0%
		Fall	6	3	5	0	5	0	0	19	73.7%	100.0%
MUS 51	2002	Spring	9	4	0	0	0	0	0	13	100.0%	100.0%
		Fall	7	2	0	0	0	0	0	9	100.0%	100.0%
	2003	Spring	8	2	0	0	0	0	0	10	100.0%	100.0%
		Fall	6	3	0	0	0	0	0	9	100.0%	100.0%
	2004	Spring	8	0	0	0	0	1	0	9	88.9%	100.0%
		Fall	5	1	0	0	0	0	0	6	100.0%	100.0%
	2005	Spring	6	0	0	1	0	0	0	7	100.0%	100.0%
		Fall	2	0	0	1	0	0	0	3	100.0%	100.0%

Grade XX = None of the above/unknown.

Success Rate: Percent of students successful in courses out of total enrolled in courses (RP Group, 1996).

The success rate is calculated by dividing the numerator (number of students duplicated with A, B, C, CR) by the denominator (number of students duplicated with A, B, C, D, F, CR, NC, W, I, XX)

Retention Rate: Percent of students retained in courses out of total students enrolled in courses (RP Group, 1996).

The retention rate is calculated by dividing the numerator (number of students duplicated with A, B, C, D, F, CR, NC, I\*, XX) by the denominator (number of students duplicated with A, B, C, D, F, CR, NC, W, I, XX).

**Music Program - Music Majors  
All Courses by Grade/Success/Retention**

Grades												success	retention		
A	B	C	CR	D	F	I	NC	W	XX	Total					
Count	Count	Count	Count	Count	Count	Count	Count	Count	Count	Count	Percent	Percent			
MUS 92	2003	Fall	10	2	0	2	0	1	2	0	2	0	19	73.7%	89.5%
	2004	Spring	11	2	0	1	0	3	0	0	2	1	20	70.0%	90.0%
		Fall	6	7	1	0	0	2	1	0	3	1	21	66.7%	85.7%
	2005	Spring	9	9	4	0	1	0	0	0	4	1	28	78.6%	85.7%
		Fall	8	5	2	0	0	1	3	0	3	0	22	68.2%	86.4%
MUS 93	2003	Fall	1	2	4	0	0	0	1	0	3	0	11	63.6%	72.7%
	2004	Spring	7	1	0	1	0	2	0	0	0	1	12	75.0%	100.0%
		Fall	1	2	1	0	1	0	0	1	0	1	7	57.1%	100.0%
	2005	Spring	1	3	2	0	0	1	1	0	0	3	11	54.5%	100.0%
		Fall	4	4	1	0	0	0	1	0	1	0	11	81.8%	90.9%

Grade XX = None of the above/unknown.

Success Rate: Percent of students successful in courses out of total enrolled in courses (RP Group, 1996).

The success rate is calculated by dividing the numerator (number of students duplicated with A, B, C, CR) by the denominator (number of students enrolled in courses).

Retention Rate: Percent of students retained in courses out of total students enrolled in courses (RP Group, 1996).

The retention rate is calculated by dividing the numerator (number of students duplicated with A, B, C, D, F, CR, NC, I\*, XX) by the denominator (total students enrolled in courses).

**Music Program - Music Majors  
Gender by Year/Term  
Duplicated Headcount**

		F		M		Total	
		Count	Row %	Count	Row %	Count	Row %
2002	Spring	31	37.8%	51	62.2%	82	100.0%
	Fall	41	43.6%	53	56.4%	94	100.0%
2003	Spring	32	28.6%	80	71.4%	112	100.0%
	Fall	65	42.8%	87	57.2%	152	100.0%
2004	Spring	59	34.9%	110	65.1%	169	100.0%
	Fall	53	37.6%	88	62.4%	141	100.0%
2005	Spring	67	37.9%	110	62.1%	177	100.0%
	Fall	50	28.9%	123	71.1%	173	100.0%

**Music Program - Music Majors by Zip Code  
Duplicated Headcount**

		Saddleback Zip		Irvine Zip		Out of District or Missing		Total	
		Count	Row %	Count	Row %	Count	Row %	Count	Row %
2002	Spring	73	89.0%	5	6.1%	4	4.9%	82	100.0%
	Fall	84	89.4%	6	6.4%	4	4.3%	94	100.0%
2003	Spring	102	91.1%	2	1.8%	8	7.1%	112	100.0%
	Fall	129	84.9%	12	7.9%	11	7.2%	152	100.0%
2004	Spring	141	83.4%	19	11.2%	9	5.3%	169	100.0%
	Fall	117	83.0%	16	11.3%	8	5.7%	141	100.0%
2005	Spring	145	81.9%	23	13.0%	9	5.1%	177	100.0%
	Fall	149	86.1%	19	11.0%	5	2.9%	173	100.0%

**Music Program - Music Majors  
Ethnicity by Year/Term  
Duplicated Headcount**

		Ethnic Groups																	
		Asian		African American		Hispanic		American Indian/Alaska Native		Other		Pacific Islander		White		Unknown		Total	
		Count	Row %	Count	Row %	Count	Row %	Count	Row %	Count	Row %	Count	Row %	Count	Row %	Count	Row %	Count	Row %
2002	Spring	17	0.7%	1	1.2%	9	1.0%	2	2.4%	0	.0%	0	.0%	47	7.3%	6	7.3%	82	0.0%
	Fall	16	7.0%	1	1.1%	9	9.6%	2	2.1%	1	1.1%	1	1.1%	57	0.6%	7	7.4%	94	0.0%
2003	Spring	20	7.9%	8	7.1%	4	3.6%	1	.9%	1	.9%	2	1.8%	71	3.4%	5	4.5%	112	0.0%
	Fall	32	1.1%	3	2.0%	12	7.9%	0	.0%	0	.0%	2	1.3%	90	9.2%	13	8.6%	152	0.0%
2004	Spring	25	4.8%	10	5.9%	11	6.5%	1	.6%	0	.0%	0	.0%	106	2.7%	16	9.5%	169	0.0%
	Fall	20	4.2%	1	.7%	13	9.2%	2	1.4%	0	.0%	0	.0%	82	8.2%	23	6.3%	141	0.0%
2005	Spring	25	4.1%	4	2.3%	20	1.3%	0	.0%	0	.0%	0	.0%	101	7.1%	27	5.3%	177	0.0%
	Fall	14	8.1%	0	.0%	24	3.9%	2	1.2%	0	.0%	1	.6%	106	1.3%	26	5.0%	173	0.0%

**Music Program - Music Majors  
Educational Goals by Year/Term  
Duplicated Headcount**

	2002				2003				2004				2005			
	Spring		Fall		Spring		Fall		Spring		Fall		Spring		Fall	
	Count	Column %	Count	Column %	Count	Column %	Count	Column %	Count	Column %	Count	Column %	Count	Column %	Count	Column %
AA/AS and tran	17	20.7%	32	34.0%	34	30.4%	43	28.3%	53	31.4%	48	34.0%	53	29.9%	54	31.2%
Transfer w/o A/	8	9.8%	12	12.8%	11	9.8%	28	18.4%	28	16.6%	27	19.1%	30	16.9%	27	15.6%
AA/AS w/o trar	3	3.7%	1	1.1%	1	.9%	1	.7%	3	1.8%	6	4.3%	3	1.7%	3	1.7%
2-yr Voc. w/o tr	4	4.9%	1	1.1%	1	.9%	6	3.9%	7	4.1%	1	.7%	3	1.7%	6	3.5%
Voc. certif. w/o	13	15.9%	13	13.8%	16	14.3%	6	3.9%	14	8.3%	15	10.6%	30	16.9%	19	11.0%
Discover interes	6	7.3%	7	7.4%	9	8.0%	10	6.6%	11	6.5%	10	7.1%	14	7.9%	15	8.7%
Acquire job skil	7	8.5%	11	11.7%	9	8.0%	14	9.2%	8	4.7%	5	3.5%	7	4.0%	8	4.6%
Update job skill	2	2.4%	1	1.1%	2	1.8%	3	2.0%	3	1.8%	1	.7%	4	2.3%	5	2.9%
Maintain cert. o	0	.0%	0	.0%	0	.0%	0	.0%	0	.0%	1	.7%	1	.6%	0	.0%
Ed. developmen	16	19.5%	8	8.5%	12	10.7%	25	16.4%	27	16.0%	18	12.8%	13	7.3%	15	8.7%
Basic Skills	0	.0%	0	.0%	0	.0%	1	.7%	4	2.4%	1	.7%	1	.6%	1	.6%
HS or GED	0	.0%	0	.0%	0	.0%	1	.7%	0	.0%	0	.0%	0	.0%	1	.6%
Undecided	6	7.3%	8	8.5%	17	15.2%	14	9.2%	11	6.5%	8	5.7%	18	10.2%	19	11.0%
Total	82	100.0%	94	100.0%	112	100.0%	152	100.0%	169	100.0%	141	100.0%	177	100.0%	173	100.0%

**Music Program - Performance  
C1 Headcount by Course/Term/Year**

	Fall				Summer				Spring			
	2002	2003	2004	2005	2002	2003	2004	2005	2002	2003	2004	2005
	C1 Headcount	C1 Headcount	C1 Headcount	C1 Headcount	C1 Headcount	C1 Headcount	C1 Headcount	C1 Headcount	C1 Headcount	C1 Headcount	C1 Headcount	C1 Headcount
MUS 31	0	0	0	.	.	.	.	.	.	.	.	.
MUS 32	.	.	.	0	.	.	.	.	0	0	.	.
MUS 33	.	.	.	0	.	.	.	.	.	.	0	0
MUS 34	.	.	0	.	.	.	.	.	.	.	0	0
MUS 35	0	0	.	.	.	.	.	.	0	0	.	.
MUS 41	0	0	0	0	.	.	.	.	0	0	0	0
MUS 42	0	0	0	0	.	.	.	.	0	0	0	0
MUS 43	.	.	.	0	.	.	.	.	.	.	.	.
MUS 44	.	.	.	0	.	.	.	.	.	0	.	.
MUS 46	.	24	16	.	.	.	.	.	.	.	19	15
MUS 47	0	0	0	0	.	.	.	.	0	0	0	0
MUS 50	0	0	0	0	.	.	.	.	0	0	0	0
MUS 51	0	0	0	0	.	.	.	.	0	0	0	0
MUS 52	0	0	0	0	.	.	.	.	0	0	0	0
MUS 54	129	123	140	124	86	42	67	60	140	127	156	138
MUS 55	28	21	24	15	17	14	30	19	32	32	29	26
MUS 56	0	0	0	0	.	.	.	.	0	0	0	0
MUS 58	9	8	10	10	.	.	.	.	13	9	11	9
MUS 59	0	0	0	.	.	.	.	.	0	0	0	0
MUS 60	44	42	32	38	.	.	.	.	38	36	29	33
MUS 61	21	14	18	21	.	.	.	.	17	21	22	15
MUS 62	0	9	7	6	.	.	.	.	0	0	14	8
MUS 63	1	13	16	10	.	.	.	.	13	13	18	15
MUS 64	0	0	0	.	.	.	.	.	0	0	0	0
MUS 66	.	.	.	14	.	.	.	.	.	.	.	.
MUS 75	.	.	9	.	.	.	.	.	.	.	.	11
MUS 80	85	87	76	63	.	.	.	.	85	78	87	77
MUS 81	16	13	8	29	.	.	.	.	11	12	10	7
MUS 82	4	3	9	11	.	.	.	.	8	2	5	7
MUS 14	.	0	0	0	.	.	.	.	.	.	0	0
MUS 17	0	0	0	0	.	.	.	.	.	.	.	.
MUS 17	.	.	.	.	.	.	.	.	0	0	0	0
MUS 25	.	19	18	16	.	.	.	.	.	.	.	14
MUS 26	93	72	88	93	.	.	.	.	122	106	120	123
MUS 29	2	23	10	.	.	.	.	.	2	5	4	8
MUS 29	.	.	21	0	.	.	.	0	.	.	.	23
Total	432	471	502	450	103	56	97	79	481	441	524	529

**Music Program - Performance**  
**End of Term Enrollment by Course/Term/Year**

	Fall				Summer				Spring			
	2002	2003	2004	2005	2002	2003	2004	2005	2002	2003	2004	2005
	End of Term Enrollment	End of Term Enrollment	End of Term Enrollment	End of Term Enrollment	End of Term Enrollment	End of Term Enrollment	End of Term Enrollment	End of Term Enrollment	End of Term Enrollment	End of Term Enrollment	End of Term Enrollment	End of Term Enrollment
MUS 31	64	57	51	0	0	0	0	0	0	0	0	0
MUS 32	0	0	0	14	0	0	0	0	43	34	0	0
MUS 33	0	0	0	42	0	0	0	0	0	0	45	41
MUS 34	0	0	12	0	0	0	0	0	0	0	17	21
MUS 35	17	17	0	0	0	0	0	0	21	15	0	0
MUS 41	29	23	28	17	0	0	0	0	17	30	31	17
MUS 42	19	14	30	22	0	0	0	0	22	12	16	28
MUS 43	0	0	0	2	0	0	0	0	0	0	0	0
MUS 44	0	0	0	10	0	0	0	0	0	22	0	0
MUS 46	0	24	16	0	0	0	0	0	0	0	19	15
MUS 47	21	8	8	5	0	0	0	0	9	10	16	12
MUS 50	7	11	19	19	0	0	0	0	6	12	15	17
MUS 51	9	9	6	3	0	0	0	0	13	10	9	7
MUS 52	11	7	8	10	0	0	0	0	7	5	5	6
MUS 54	135	128	140	124	88	44	70	60	146	131	156	138
MUS 55	36	33	31	27	19	14	31	21	39	48	39	36
MUS 56	15	22	15	10	0	0	0	0	12	9	13	13
MUS 58	14	9	11	20	0	0	0	0	23	21	13	16
MUS 59	34	29	32	0	0	0	0	0	28	31	29	32
MUS 60	45	42	32	38	0	0	0	0	39	36	29	33
MUS 61	21	14	18	21	0	0	0	0	17	21	23	15
MUS 62	11	9	7	6	0	0	0	0	9	13	14	8
MUS 63	1	13	17	10	0	0	0	0	14	13	18	15
MUS 64	13	5	11	0	0	0	0	0	12	13	12	12
MUS 66	0	0	0	14	0	0	0	0	0	0	0	0
MUS 75	0	0	9	0	0	0	0	0	0	0	0	11
MUS 80	85	88	76	63	0	0	0	0	85	78	87	77
MUS 81	16	13	8	29	0	0	0	0	11	12	10	7
MUS 82	4	3	9	11	0	0	0	0	8	2	5	7
MUS 148	0	19	19	13	0	0	0	0	0	0	17	22
MUS 178	9	12	10	5	0	0	0	0	0	0	0	0
MUS 179	0	0	0	0	0	0	0	0	11	4	12	7
MUS 252	0	19	18	16	0	0	0	0	0	0	0	14
MUS 260	96	73	88	93	0	0	0	0	123	106	120	123
MUS 295	4	23	17	0	0	0	0	0	3	5	4	8
MUS 297	0	0	21	26	0	0	0	24	0	0	0	23
Total	716	724	767	670	107	58	101	105	718	693	774	781

**Music Program - Performance  
Courses by Grade/Success/Retention**

		Grades											success	retention
		A	B	C	CR	D	F	I	NC	W	XX	Total		
		Count	Count	Count	Count	Count	Count	Count	Count	Count	Count	Count	Percent	Percent
2002	Spring	422	73	36	14	27	22	4	5	82	33	718	75.9%	88.6%
	Summer	57	12	4	6	0	5	0	2	14	7	107	73.8%	86.9%
	Fall	428	55	42	21	11	17	0	5	84	53	716	76.3%	88.3%
2003	Spring	431	65	24	23	23	17	0	3	69	38	693	78.4%	90.0%
	Summer	43	2	0	2	0	0	0	0	4	7	58	81.0%	93.1%
	Fall	461	71	32	33	11	22	1	4	55	34	724	82.5%	92.4%
2004	Spring	409	57	40	33	15	36	1	4	71	108	774	69.6%	90.8%
	Summer	58	7	3	6	0	6	0	1	8	12	101	73.3%	92.1%
	Fall	467	56	34	39	13	33	0	11	62	52	767	77.7%	91.9%
2005	Spring	488	74	38	58	17	21	1	10	49	25	781	84.3%	93.7%
	Summer	75	6	3	5	1	2	0	0	8	5	105	84.8%	92.4%
	Fall	434	36	23	44	26	15	1	8	39	44	670	80.1%	94.2%

Grade XX = None of the above/unknown.

Success Rate: Percent of students successful in courses out of total enrolled in courses (RP Group, 1996).

The success rate is calculated by dividing the numerator (number of students duplicated with A, B, C, CR) by the denominator (number of students with

Retention Rate: Percent of students retained in courses out of total students enrolled in courses (RP Group, 1996).

The retention rate is calculated by dividing the numerator (number of students duplicated with A, B, C, D, F, CR, NC, I, XX) by the denominator (num W, I, XX).

**Music Program - Performance  
All Courses by Grade/Success/Retention**

			Grades						success	retention
			A	B	CR	W	XX	Total		
			Count	Count	Count	Count	Count	Count	Percent	Percent
MUS 31	2002	Fall	60	0	0	4	0	64	93.8%	93.8%
	2003	Fall	55	0	0	2	0	57	96.5%	96.5%
	2004	Fall	46	0	4	1	0	51	98.0%	98.0%
MUS 32	2002	Spring	37	0	0	5	1	43	86.0%	88.4%
	2003	Spring	29	0	1	3	1	34	88.2%	91.2%
	2005	Fall	13	0	1	0	0	14	100.0%	100.0%
MUS 33	2004	Spring	40	1	0	2	2	45	91.1%	95.6%
	2005	Spring	37	0	4	0	0	41	100.0%	100.0%
		Fall	37	0	5	0	0	42	100.0%	100.0%

Grade XX = None of the above/unknown.

Success Rate: Percent of students successful in courses out of total enrolled in courses (RP Group, 1996).

The success rate is calculated by dividing the numerator (number of students duplicated with A, B, C, CR) by the denominator (number of students with A, B, C, D, F, CR, NC, W, I, XX)

Retention Rate: Percent of students retained in courses out of total students enrolled in courses (RP Group, 1996).

The retention rate is calculated by dividing the numerator (number of students duplicated with A, B, C, D, F, CR, NC, I\*, XX) by the denominator (number of students with A, B, C, D, F, CR, NC, W, I, XX).

**Music Program - Performance**  
**All Courses by Grade/Success/Retention**

			Grades					success	retention
			A	C	CR	W	Total	Percent	Percent
			Count	Count	Count	Count	Count		
MUS 34	2004	Spring	16	0	0	1	17	94.1%	94.1%
		Fall	12	0	0	0	12	100.0%	100.0%
	2005	Spring	20	0	1	0	21	100.0%	100.0%
MUS 35	2002	Spring	20	0	0	1	21	95.2%	95.2%
		Fall	13	2	0	2	17	88.2%	88.2%
	2003	Spring	14	0	0	1	15	93.3%	93.3%
		Fall	15	0	0	2	17	88.2%	88.2%

Grade XX = None of the above/unknown.

Success Rate: Percent of students successful in courses out of total enrolled in courses (RP Group, 1996).

The success rate is calculated by dividing the numerator (number of students duplicated with A, B, C, CR) by the denominator (number of students with A, B, C, D, F, CR, NC, W, I, XX)

Retention Rate: Percent of students retained in courses out of total students enrolled in courses (RP Group, 1996).

The retention rate is calculated by dividing the numerator (number of students duplicated with A, B, C, D, F, CR, NC, I\*, XX) by the denominator (number of students with A, B, C, D, F, CR, NC, W, I, XX).

**Music Program - Performance**  
**All Courses by Grade/Success/Retention**

Grades												success	retention	
			A	B	C	CR	D	F	I	NC	XX	Total	Percent	Percent
			Count	Count	Count	Count	Count	Count	Count	Count	Count	Count		
MUS 41	2002	Spring	15	1	0	0	0	0	0	1	0	17	94.1%	100.0%
		Fall	26	0	0	0	0	3	0	0	0	29	89.7%	100.0%
	2003	Spring	28	2	0	0	0	0	0	0	0	30	100.0%	100.0%
		Fall	13	4	4	0	1	1	0	0	0	23	91.3%	100.0%
	2004	Spring	20	2	1	0	4	2	0	0	2	31	74.2%	100.0%
		Fall	26	1	0	1	0	0	0	0	0	28	100.0%	100.0%
	2005	Spring	15	0	1	1	0	0	0	0	0	17	100.0%	100.0%
		Fall	14	2	0	0	0	0	0	1	0	17	94.1%	100.0%
MUS 42	2002	Spring	18	0	3	0	0	0	1	0	0	22	95.5%	100.0%
		Fall	16	2	0	0	0	1	0	0	0	19	94.7%	100.0%
	2003	Spring	12	0	0	0	0	0	0	0	0	12	100.0%	100.0%
		Fall	12	0	1	0	0	1	0	0	0	14	92.9%	100.0%
	2004	Spring	12	0	0	0	0	2	1	0	1	16	75.0%	100.0%
		Fall	20	1	0	3	2	4	0	0	0	30	80.0%	100.0%
	2005	Spring	20	3	0	3	0	1	0	0	1	28	92.9%	100.0%
		Fall	18	0	1	1	0	1	1	0	0	22	90.9%	100.0%
MUS 43	2005	Fall	2	0	0	0	0	0	0	0	2	100.0%	100.0%	

Grade XX = None of the above/unknown.

Success Rate: Percent of students successful in courses out of total enrolled in courses (RP Group, 1996).

The success rate is calculated by dividing the numerator (number of students duplicated with A, B, C, CR) by the denominator (number of students with A, B, C, CR, D, F, I, NC, W, I, XX).

Retention Rate: Percent of students retained in courses out of total students enrolled in courses (RP Group, 1996).

The retention rate is calculated by dividing the numerator (number of students duplicated with A, B, C, D, F, CR, NC, I\*, XX) by the denominator (number of students with A, B, C, D, F, CR, NC, W, I, XX).

**Music Program - Performance**  
**All Courses by Grade/Success/Retention**

			Grades								success	retention	
			A	B	C	CR	D	F	W	XX	Total		
			Count	Count	Count	Count	Count	Count	Count	Count	Count	Percent	Percent
MUS 44	2003	Spring	19	0	0	2	0	0	1	0	22	95.5%	95.5%
	2005	Fall	9	0	0	1	0	0	0	0	10	100.0%	100.0%
MUS 46	2003	Fall	10	6	0	2	2	1	2	1	24	75.0%	91.7%
	2004	Spring	5	6	3	0	1	3	1	0	19	73.7%	94.7%
		Fall	10	2	1	0	0	1	2	0	16	81.3%	87.5%
	2005	Spring	7	6	1	0	0	1	0	0	15	93.3%	100.0%
MUS 47	2002	Spring	7	1	1	0	0	0	0	0	9	100.0%	100.0%
		Fall	14	0	0	0	0	0	1	6	21	66.7%	95.2%
	2003	Spring	10	0	0	0	0	0	0	0	10	100.0%	100.0%
		Fall	8	0	0	0	0	0	0	0	8	100.0%	100.0%
	2004	Spring	16	0	0	0	0	0	0	0	16	100.0%	100.0%
		Fall	8	0	0	0	0	0	0	0	8	100.0%	100.0%
	2005	Spring	11	0	0	0	0	0	0	1	12	91.7%	100.0%
		Fall	5	0	0	0	0	0	0	0	5	100.0%	100.0%

Grade XX = None of the above/unknown.

Success Rate: Percent of students successful in courses out of total enrolled in courses (RP Group, 1996).

The success rate is calculated by dividing the numerator (number of students duplicated with A, B, C, CR) by the denominator (number of students with A, B, C, CR, D, F, CR, NC, W, I, XX)

Retention Rate: Percent of students retained in courses out of total students enrolled in courses (RP Group, 1996).

The retention rate is calculated by dividing the numerator (number of students duplicated with A, B, C, D, F, CR, NC, I\*, XX) by the denominator (number of students with A, B, C, D, F, CR, NC, W, I, XX).

**Music Program - Performance  
All Courses by Grade/Success/Retention**

		Grades									success	retention	
		A	B	C	CR	D	F	I	XX	Total			
		Count	Count	Count	Count	Count	Count	Count	Count	Count	Percent	Percent	
MUS 50	2002	Spring	5	0	1	0	0	0	0	0	6	100.0%	100.0%
		Fall	6	1	0	0	0	0	0	0	7	100.0%	100.0%
	2003	Spring	7	5	0	0	0	0	0	0	12	100.0%	100.0%
		Fall	7	3	1	0	0	0	0	0	11	100.0%	100.0%
	2004	Spring	11	0	2	0	0	2	0	0	15	86.7%	100.0%
		Fall	9	6	1	0	0	2	0	1	19	84.2%	100.0%
	2005	Spring	9	6	1	0	1	0	0	0	17	94.1%	100.0%
		Fall	6	3	5	0	5	0	0	0	19	73.7%	100.0%
MUS 51	2002	Spring	9	4	0	0	0	0	0	0	13	100.0%	100.0%
		Fall	7	2	0	0	0	0	0	0	9	100.0%	100.0%
	2003	Spring	8	2	0	0	0	0	0	0	10	100.0%	100.0%
		Fall	6	3	0	0	0	0	0	0	9	100.0%	100.0%
	2004	Spring	8	0	0	0	0	1	0	0	9	88.9%	100.0%
		Fall	5	1	0	0	0	0	0	0	6	100.0%	100.0%
	2005	Spring	6	0	0	1	0	0	0	0	7	100.0%	100.0%
		Fall	2	0	0	1	0	0	0	0	3	100.0%	100.0%
MUS 52	2002	Spring	6	0	0	0	0	0	1	0	7	85.7%	100.0%
		Fall	9	0	2	0	0	0	0	0	11	100.0%	100.0%
	2003	Spring	3	2	0	0	0	0	0	0	5	100.0%	100.0%
		Fall	7	0	0	0	0	0	0	0	7	100.0%	100.0%
	2004	Spring	4	0	1	0	0	0	0	0	5	100.0%	100.0%
		Fall	8	0	0	0	0	0	0	0	8	100.0%	100.0%
	2005	Spring	5	0	1	0	0	0	0	0	6	100.0%	100.0%
		Fall	9	1	0	0	0	0	0	0	10	100.0%	100.0%

Grade XX = None of the above/unknown.

Success Rate: Percent of students successful in courses out of total enrolled in courses (RP Group, 1996).

The success rate is calculated by dividing the numerator (number of students duplicated with A, B, C, CR) by the denominator (number of students with A, B, C, CR, XX)

Retention Rate: Percent of students retained in courses out of total students enrolled in courses (RP Group, 1996).

The retention rate is calculated by dividing the numerator (number of students duplicated with A, B, C, D, F, CR, NC, I\*, XX) by the denominator (number of : D, F, CR, NC, W, I, XX).

**Music Program - Performance  
All Courses by Grade/Success/Retention**

													success	retention		
Grades																
		A	B	C	CR	D	F	I	NC	W	XX	Total	Percent	Percent		
		Count	Count	Count	Count	Count	Count	Count	Count	Count	Count	Count				
MUS 54	2002	Spring	65	20	1	7	2	10	1	0	29	11	146	63.7%	80.1%	
		Summer	50	11	3	5	0	5	0	1	11	2	88	78.4%	87.5%	
		Fall	59	12	10	9	1	2	0	1	27	14	135	66.7%	80.0%	
	2003	Spring	64	17	6	5	1	10	0	2	14	12	131	70.2%	89.3%	
		Summer	34	2	0	1	0	0	0	0	4	3	44	84.1%	90.9%	
		Fall	50	20	8	5	1	9	0	2	20	13	128	64.8%	84.4%	
	2004	Spring	61	16	9	8	2	15	0	1	29	15	156	60.3%	81.4%	
		Summer	37	5	2	4	0	5	0	1	6	10	70	68.6%	91.4%	
		Fall	51	12	11	6	0	9	0	9	28	14	140	57.1%	80.0%	
	2005	Spring	59	15	11	14	3	3	1	0	27	5	138	71.7%	80.4%	
		Summer	34	6	3	5	1	2	0	0	6	3	60	80.0%	90.0%	
		Fall	51	8	4	11	4	6	0	3	20	17	124	59.7%	83.9%	
	MUS 55	2002	Spring	20	7	1	1	1	1	0	0	4	4	39	74.4%	89.7%
			Summer	7	1	1	1	0	0	0	1	3	5	19	52.6%	84.2%
			Fall	23	4	2	1	0	0	0	0	5	1	36	83.3%	86.1%
2003		Spring	30	2	2	2	1	0	0	0	6	5	48	75.0%	87.5%	
		Summer	9	0	0	1	0	0	0	0	0	4	14	71.4%	100.0%	
		Fall	24	3	0	2	0	0	0	0	2	2	33	87.9%	93.9%	
2004		Spring	26	1	0	3	1	0	0	0	4	4	39	76.9%	89.7%	
		Summer	21	2	1	2	0	1	0	0	2	2	31	83.9%	93.5%	
		Fall	14	4	1	4	1	0	0	0	2	5	31	74.2%	93.5%	
2005		Spring	18	2	3	3	2	3	0	2	1	2	36	72.2%	97.2%	
		Summer	17	0	0	0	0	0	0	0	2	2	21	81.0%	90.5%	
		Fall	16	0	1	4	0	1	0	0	2	3	27	77.8%	92.6%	
MUS 56		2002	Spring	8	3	0	1	0	0	0	0	0	0	12	100.0%	100.0%
			Fall	7	5	0	0	0	0	0	1	1	1	15	80.0%	93.3%
		2003	Spring	5	1	1	0	0	0	0	0	2	0	9	77.8%	77.8%
	Fall		16	1	1	2	1	0	0	0	0	1	22	90.9%	100.0%	
	2004	Spring	6	3	2	2	0	0	0	0	0	0	13	100.0%	100.0%	
		Fall	8	4	0	2	0	0	0	0	1	0	15	93.3%	93.3%	
	2005	Spring	8	3	0	2	0	0	0	0	0	0	13	100.0%	100.0%	
		Fall	3	2	0	0	0	0	0	0	2	3	10	50.0%	80.0%	

Grade XX = None of the above/unknown.

Success Rate: Percent of students successful in courses out of total enrolled in courses (RP Group, 1996).

The success rate is calculated by dividing the numerator (number of students duplicated with A, B, C, CR) by the denominator (number of students with A, B, C, CR).

Retention Rate: Percent of students retained in courses out of total students enrolled in courses (RP Group, 1996).

The retention rate is calculated by dividing the numerator (number of students duplicated with A, B, C, D, F, CR, NC, I\*, XX) by the denominator (number of students with A, B, C, D, F, CR, NC, I\*, XX).

**Music Program - Performance**  
**All Courses by Grade/Success/Retention**

		Grades										success	retention	
		A	B	C	CR	D	F	NC	W	XX	Total	Percent	Percent	
		Count	Count	Count	Count	Count	Count	Count	Count	Count	Count			
MUS 58	2002	Spring	22	0	0	0	0	0	0	1	0	23	95.7%	95.7%
		Fall	12	0	0	2	0	0	0	0	0	14	100.0%	100.0%
	2003	Spring	20	0	0	1	0	0	0	0	0	21	100.0%	100.0%
		Fall	6	0	0	1	0	0	0	0	2	9	77.8%	100.0%
	2004	Spring	12	0	0	0	0	0	0	0	1	13	92.3%	100.0%
		Fall	11	0	0	0	0	0	0	0	0	11	100.0%	100.0%
	2005	Spring	10	0	0	6	0	0	0	0	0	16	100.0%	100.0%
		Fall	17	0	0	1	0	0	0	1	1	20	90.0%	95.0%
MUS 59	2002	Spring	19	1	5	0	2	0	0	1	0	28	89.3%	96.4%
		Fall	27	1	3	0	0	3	0	0	0	34	91.2%	100.0%
	2003	Spring	25	3	3	0	0	0	0	0	0	31	100.0%	100.0%
		Fall	22	0	6	0	0	1	0	0	0	29	96.6%	100.0%
	2004	Spring	17	3	5	0	1	3	0	0	0	29	86.2%	100.0%
		Fall	18	5	7	0	2	0	0	0	0	32	93.8%	100.0%
	2005	Spring	16	11	3	1	1	0	0	0	0	32	96.9%	100.0%
		Fall	17	0	4	0	11	0	2	4	1	39	53.8%	89.7%
MUS 60	2002	Spring	17	0	4	0	11	0	2	4	1	39	53.8%	89.7%
		Fall	21	3	3	1	6	0	1	5	5	45	62.2%	88.9%
	2003	Spring	13	2	1	0	9	0	1	6	4	36	44.4%	83.3%
		Fall	26	2	2	1	0	5	1	4	1	42	73.8%	90.5%
	2004	Spring	0	0	0	0	0	0	0	2	27	29	.0%	93.1%
		Fall	22	0	0	0	0	0	0	2	8	32	68.8%	93.8%
	2005	Spring	26	0	0	2	0	0	0	2	3	33	84.8%	93.9%
		Fall	30	0	0	0	0	0	0	3	5	38	78.9%	92.1%
MUS 61	2002	Spring	7	3	0	1	3	0	0	3	0	17	64.7%	82.4%
		Fall	9	1	1	3	0	0	1	1	5	21	66.7%	95.2%
	2003	Spring	11	2	0	0	6	0	0	2	0	21	61.9%	90.5%
		Fall	12	1	0	0	0	1	0	0	0	14	92.9%	100.0%
	2004	Spring	0	0	0	0	0	0	0	0	23	23	.0%	100.0%
		Fall	16	0	0	0	0	0	0	2	0	18	88.9%	88.9%
	2005	Spring	11	0	0	2	0	0	0	1	1	15	86.7%	93.3%
		Fall	18	0	0	1	0	0	0	0	2	21	90.5%	100.0%

Grade XX = None of the above/unknown.

Success Rate: Percent of students successful in courses out of total enrolled in courses (RP Group, 1996).

The success rate is calculated by dividing the numerator (number of students duplicated with A, B, C, CR) by the denominator (number of students with /

Retention Rate: Percent of students retained in courses out of total students enrolled in courses (RP Group, 1996).

The retention rate is calculated by dividing the numerator (number of students duplicated with A, B, C, D, F, CR, NC, I\*, XX) by the denominator (numb I, XX).

**Music Program - Performance**  
**All Courses by Grade/Success/Retention**

		Grades										success	retention	
		A	B	C	CR	D	F	NC	W	XX	Total			
		Count	Count	Count	Count	Count	Count	Count	Count	Count	Count	Percent	Percent	
MUS 62	2002	Spring	7	0	1	0	1	0	0	0	0	9	88.9%	100.0%
		Fall	9	1	1	0	0	0	0	0	0	11	100.0%	100.0%
	2003	Spring	11	1	0	0	0	0	0	0	1	13	92.3%	100.0%
		Fall	5	0	2	1	1	0	0	0	0	9	88.9%	100.0%
	2004	Spring	0	0	0	0	0	0	0	0	14	14	.0%	100.0%
		Fall	3	0	0	0	0	1	0	3	0	7	42.9%	57.1%
	2005	Spring	7	0	0	0	0	0	0	1	0	8	87.5%	87.5%
		Fall	3	0	0	0	0	0	0	0	3	6	50.0%	100.0%
MUS 63	2002	Spring	10	0	0	0	0	2	0	1	1	14	71.4%	92.9%
		Fall	1	0	0	0	0	0	0	0	0	1	100.0%	100.0%
	2003	Spring	13	0	0	0	0	0	0	0	0	13	100.0%	100.0%
		Fall	12	0	0	1	0	0	0	0	0	13	100.0%	100.0%
	2004	Spring	17	0	0	1	0	0	0	0	0	18	100.0%	100.0%
		Fall	16	0	0	1	0	0	0	0	0	17	100.0%	100.0%
	2005	Spring	15	0	0	0	0	0	0	0	0	15	100.0%	100.0%
		Fall	10	0	0	0	0	0	0	0	0	10	100.0%	100.0%
MUS 64	2002	Spring	9	3	0	0	0	0	0	0	0	12	100.0%	100.0%
		Fall	10	2	0	0	0	1	0	0	0	13	92.3%	100.0%
	2003	Spring	11	0	0	0	0	0	0	1	1	13	84.6%	92.3%
		Fall	4	1	0	0	0	0	0	0	0	5	100.0%	100.0%
	2004	Spring	9	0	0	2	0	0	0	0	1	12	91.7%	100.0%
		Fall	7	2	1	0	0	0	1	0	0	11	90.9%	100.0%
	2005	Spring	11	0	0	1	0	0	0	0	0	12	100.0%	100.0%

Grade XX = None of the above/unknown.

Success Rate: Percent of students successful in courses out of total enrolled in courses (RP Group, 1996).

The success rate is calculated by dividing the numerator (number of students duplicated with A, B, C, CR) by the denominator (number of students with A

Retention Rate: Percent of students retained in courses out of total students enrolled in courses (RP Group, 1996).

The retention rate is calculated by dividing the numerator (number of students duplicated with A, B, C, D, F, CR, NC, I\*, XX) by the denominator (number of students with A, B, C, D, F, CR, NC, I\*, XX).

**Music Program - Performance  
All Courses by Grade/Success/Retention**

			Grades			success	retention
			A	CR	Total	Percent	Percent
			Count	Count	Count		
MUS 66	2005	Fall	13	1	14	100.0%	100.0%
MUS 75	2004	Fall	8	1	9	100.0%	100.0%
	2005	Spring	11	0	11	100.0%	100.0%

Grade XX = None of the above/unknown.

Success Rate: Percent of students successful in courses out of total enrolled in courses (RP Group, 1996).

The success rate is calculated by dividing the numerator (number of students duplicated with A, B, C, CR) by the denominator (number of students with A, B, C, D, F, CR, NC, W, I, XX)

Retention Rate: Percent of students retained in courses out of total students enrolled in courses (RP Group, 1996).

The retention rate is calculated by dividing the numerator (number of students duplicated with A, B, C, D, F, CR, NC, I\*, XX) by the denominator (number of students with A, B, C, D, F, CR, NC, W, I, XX).

**Music Program - Performance  
All Courses by Grade/Success/Retention**

			Grades									success	retention	
			A	B	C	CR	D	F	NC	W	XX	Total	Percent	Percent
			Count	Count	Count	Count	Count	Count	Count	Count	Count	Count		
MUS 80	2002	Spring	41	12	3	2	0	3	1	16	7	85	68.2%	81.2%
		Fall	41	8	4	4	1	3	0	16	8	85	67.1%	81.2%
	2003	Spring	37	10	2	6	0	2	0	14	7	78	70.5%	82.1%
		Fall	50	11	4	3	2	3	0	12	3	88	77.3%	86.4%
	2004	Spring	40	12	7	5	1	0	0	15	7	87	73.6%	82.8%
		Fall	37	7	8	4	0	6	0	7	7	76	73.7%	90.8%
	2005	Spring	40	12	6	6	0	3	0	9	1	77	83.1%	88.3%
		Fall	35	8	1	4	5	1	1	5	3	63	76.2%	92.1%

Grade XX = None of the above/unknown.

Success Rate: Percent of students successful in courses out of total enrolled in courses (RP Group, 1996).

The success rate is calculated by dividing the numerator (number of students duplicated with A, B, C, CR) by the denominator (number of students with A, B, C, D, F, CR, NC, W, I, XX)

Retention Rate: Percent of students retained in courses out of total students enrolled in courses (RP Group, 1996).

The retention rate is calculated by dividing the numerator (number of students duplicated with A, B, C, D, F, CR, NC, I\*, XX) by the denominator (number of students with A, B, C, D, F, CR, NC, W, I, XX).

**Music Program - Performance**  
**All Courses by Grade/Success/Retention**

			Grades					success	retention	
			A	B	CR	W	XX	Total		
			Count	Count	Count	Count	Count	Count	Percent	Percent
MUS 178	2002	Fall	6	1	0	2	0	9	77.8%	77.8%
	2003	Fall	3	2	6	0	1	12	91.7%	100.0%
	2004	Fall	5	0	4	0	1	10	90.0%	100.0%
	2005	Fall	3	0	2	0	0	5	100.0%	100.0%
MUS 179	2002	Spring	9	2	0	0	0	11	100.0%	100.0%
	2003	Spring	1	0	3	0	0	4	100.0%	100.0%
	2004	Spring	3	0	8	0	1	12	91.7%	100.0%
	2005	Spring	2	1	4	0	0	7	100.0%	100.0%

Grade XX = None of the above/unknown.

Success Rate: Percent of students successful in courses out of total enrolled in courses (RP Group, 1996).

The success rate is calculated by dividing the numerator (number of students duplicated with A, B, C, CR) by the denominator (number of students with A, B, C, D, F, CR, NC, W, I, XX)

Retention Rate: Percent of students retained in courses out of total students enrolled in courses (RP Group, 1996).

The retention rate is calculated by dividing the numerator (number of students duplicated with A, B, C, D, F, CR, NC, I\*, XX) by the denominator (number of students with A, B, C, D, F, CR, NC, W, I, XX).

**Music Program - Performance**  
**All Courses by Grade/Success/Retention**

		Grades											success	retention
		A	B	C	CR	D	F	I	NC	W	XX	Total		
		Count	Count	Count	Count	Count	Count	Count	Count	Count	Count	Count	Percent	Percent
MUS 252	2003 Fall	6	4	0	3	1	0	1	1	2	1	19	68.4%	89.5%
	2004 Fall	4	1	1	6	2	0	0	1	2	1	18	66.7%	88.9%
	2005 Spring	7	1	0	3	0	0	0	0	1	2	14	78.6%	92.9%
	2005 Fall	11	2	0	1	0	0	0	0	1	1	16	87.5%	93.8%
MUS 260	2002 Spring	55	14	14	2	7	6	0	1	16	8	123	69.1%	87.0%
	2002 Fall	37	9	14	1	3	4	0	1	14	13	96	63.5%	85.4%
	2003 Spring	47	14	9	1	6	5	0	0	18	6	106	67.0%	83.0%
	2003 Fall	44	8	2	4	2	0	0	0	6	7	73	79.5%	91.8%
	2004 Spring	57	12	9	3	5	7	0	3	15	9	120	67.5%	87.5%
	2004 Fall	49	8	2	3	6	3	0	0	9	8	88	70.5%	89.8%
	2005 Spring	59	12	10	4	8	9	0	8	4	9	123	69.1%	96.7%
	2005 Fall	48	8	6	6	11	4	0	3	3	4	93	73.1%	96.8%
MUS 295	2002 Spring	3	0	0	0	0	0	0	0	0	0	3	100.0%	100.0%
	2002 Fall	2	1	0	0	0	0	0	0	1	0	4	75.0%	75.0%
	2003 Spring	4	0	0	0	0	0	0	0	1	0	5	80.0%	80.0%
	2003 Fall	21	0	0	1	0	0	0	0	1	0	23	95.7%	95.7%
	2004 Spring	4	0	0	0	0	0	0	0	0	0	4	100.0%	100.0%
	2004 Fall	14	1	0	0	0	1	0	0	0	1	17	88.2%	100.0%
MUS 297	2005 Spring	8	0	0	0	0	0	0	0	0	0	8	100.0%	100.0%
	2004 Fall	20	0	0	0	0	0	0	0	1	0	21	95.2%	95.2%
	2005 Spring	22	0	0	0	0	1	0	0	0	0	23	95.7%	100.0%
	2005 Summe	24	0	0	0	0	0	0	0	0	0	24	100.0%	100.0%
	2005 Fall	26	0	0	0	0	0	0	0	0	0	26	100.0%	100.0%

Grade XX = None of the above/unknown.

Success Rate: Percent of students successful in courses out of total enrolled in courses (RP Group, 1996).

The success rate is calculated by dividing the numerator (number of students duplicated with A, B, C, CR) by the denominator (number of students with A, B, C, CR, D, F, CR, NC, I\*, XX)

Retention Rate: Percent of students retained in courses out of total students enrolled in courses (RP Group, 1996).

The retention rate is calculated by dividing the numerator (number of students duplicated with A, B, C, D, F, CR, NC, I\*, XX) by the denominator (number of students with A, B, C, D, F, CR, NC, I\*, XX)

**Music Program - Performance  
Gender by Year/Term  
Duplicated Headcount**

		F		M		X		Total	
		Count	Row %	Count	Row %	Count	Row %	Count	Row %
2002	Spring	405	56.4%	313	43.6%	0	.0%	718	100.0%
	Summer	69	64.5%	38	35.5%	0	.0%	107	100.0%
	Fall	389	54.3%	327	45.7%	0	.0%	716	100.0%
2003	Spring	365	52.7%	326	47.0%	2	.3%	693	100.0%
	Summer	31	53.4%	27	46.6%	0	.0%	58	100.0%
	Fall	406	56.1%	317	43.8%	1	.1%	724	100.0%
2004	Spring	395	51.0%	378	48.8%	1	.1%	774	100.0%
	Summer	52	51.5%	49	48.5%	0	.0%	101	100.0%
	Fall	389	50.7%	377	49.2%	1	.1%	767	100.0%
2005	Spring	408	52.2%	373	47.8%	0	.0%	781	100.0%
	Summer	50	47.6%	55	52.4%	0	.0%	105	100.0%
	Fall	352	52.5%	316	47.2%	2	.3%	670	100.0%

**Music Program - Performance by Zip Code  
Duplicated Headcount**

		Saddleback Zip		Irvine Zip		Out of District or Missing		Total	
		Count	Row %	Count	Row %	Count	Row %	Count	Row %
2002	Spring	647	90.1%	33	4.6%	38	5.3%	718	100.0%
	Summer	98	91.6%	3	2.8%	6	5.6%	107	100.0%
	Fall	637	89.0%	23	3.2%	56	7.8%	716	100.0%
2003	Spring	626	90.3%	27	3.9%	40	5.8%	693	100.0%
	Summer	47	81.0%	4	6.9%	7	12.1%	58	100.0%
	Fall	635	87.7%	41	5.7%	48	6.6%	724	100.0%
2004	Spring	688	88.9%	41	5.3%	45	5.8%	774	100.0%
	Summer	85	84.2%	7	6.9%	9	8.9%	101	100.0%
	Fall	657	85.7%	48	6.3%	62	8.1%	767	100.0%
2005	Spring	670	85.8%	46	5.9%	65	8.3%	781	100.0%
	Summer	89	84.8%	2	1.9%	14	13.3%	105	100.0%
	Fall	570	85.1%	39	5.8%	61	9.1%	670	100.0%

**Music Program - Performance  
Ethnicity by Year/Term  
Duplicated Headcount**

		Ethnic Groups																	
		Asian		African American		Hispanic		American Indian/Alaskan Native		Other		Pacific Islander		White		Unknown		Total	
		Count	Row %	Count	Row %	Count	Row %	Count	Row %	Count	Row %	Count	Row %	Count	Row %	Count	Row %	Count	Row %
2002	Spring	102	14.2%	7	1.0%	64	8.9%	9	1.3%	9	1.3%	8	1.1%	463	64.5%	56	7.8%	718	100.0%
	Summe	14	13.1%	1	.9%	17	15.9%	1	.9%	0	.0%	2	1.9%	56	52.3%	16	15.0%	107	100.0%
	Fall	99	13.8%	7	1.0%	74	10.3%	2	.3%	14	2.0%	8	1.1%	448	62.6%	64	8.9%	716	100.0%
2003	Spring	117	16.9%	13	1.9%	66	9.5%	1	.1%	4	.6%	5	.7%	432	62.3%	55	7.9%	693	100.0%
	Summe	8	13.8%	0	.0%	8	13.8%	0	.0%	0	.0%	0	.0%	28	48.3%	14	24.1%	58	100.0%
	Fall	89	12.3%	16	2.2%	67	9.3%	1	.1%	4	.6%	4	.6%	469	64.8%	74	10.2%	724	100.0%
2004	Spring	115	14.9%	13	1.7%	74	9.6%	2	.3%	11	1.4%	5	.6%	479	61.9%	75	9.7%	774	100.0%
	Summe	17	16.8%	1	1.0%	14	13.9%	0	.0%	1	1.0%	0	.0%	56	55.4%	12	11.9%	101	100.0%
	Fall	102	13.3%	8	1.0%	78	10.2%	1	.1%	7	.9%	5	.7%	482	62.8%	84	11.0%	767	100.0%
2005	Spring	101	12.9%	6	.8%	84	10.8%	4	.5%	9	1.2%	3	.4%	477	61.1%	97	12.4%	781	100.0%
	Summe	13	12.4%	4	3.8%	15	14.3%	1	1.0%	3	2.9%	0	.0%	58	55.2%	11	10.5%	105	100.0%
	Fall	70	10.4%	6	.9%	84	12.5%	4	.6%	9	1.3%	1	.1%	424	63.3%	72	10.7%	670	100.0%

**Music Program - Performance  
Educational Goals by Year/Term  
Duplicated Headcount**

	2002				2003				2004				2005			
	Spring		Fall		Spring		Fall		Spring		Fall		Spring		Fall	
	Count	Column %	Count	Column %	Count	Column %	Count	Column %	Count	Column %	Count	Column %	Count	Column %	Count	Column %
AA/AS and transf	125	17.4%	139	19.4%	139	20.1%	144	19.9%	175	22.6%	140	18.3%	131	16.8%	132	19.7%
Transfer w/o AA/AS	41	5.7%	49	6.8%	45	6.5%	64	8.8%	59	7.6%	75	9.8%	82	10.5%	65	9.7%
AA/AS w/o transf	7	1.0%	5	.7%	3	.4%	6	.8%	5	.6%	6	.8%	4	.5%	2	.3%
2-yr Voc. w/o tran	8	1.1%	7	1.0%	7	1.0%	11	1.5%	8	1.0%	9	1.2%	5	.6%	11	1.6%
Voc. certif. w/o tra	62	8.6%	56	7.8%	47	6.8%	42	5.8%	67	8.7%	68	8.9%	62	7.9%	36	5.4%
Discover interests	51	7.1%	44	6.1%	32	4.6%	34	4.7%	37	4.8%	44	5.7%	36	4.6%	39	5.8%
Acquire job skills	75	10.4%	67	9.4%	54	7.8%	56	7.7%	65	8.4%	64	8.3%	78	10.0%	51	7.6%
Update job skills	30	4.2%	29	4.1%	24	3.5%	19	2.6%	18	2.3%	12	1.6%	16	2.0%	9	1.3%
Maintain cert. or li	1	.1%	1	.1%	3	.4%	4	.6%	3	.4%	3	.4%	1	.1%	1	.1%
Ed. development	238	33.1%	202	28.2%	202	29.1%	238	32.9%	234	30.2%	240	31.3%	258	33.0%	234	34.9%
Basic Skills	6	.8%	5	.7%	16	2.3%	16	2.2%	20	2.6%	23	3.0%	26	3.3%	21	3.1%
HS or GED	3	.4%	8	1.1%	8	1.2%	5	.7%	4	.5%	2	.3%	5	.6%	2	.3%
Undecided	71	9.9%	104	14.5%	112	16.2%	84	11.6%	79	10.2%	81	10.6%	77	9.9%	66	9.9%
Unknown	0	.0%	0	.0%	1	.1%	1	.1%	0	.0%	0	.0%	0	.0%	1	.1%
<b>Total</b>	<b>718</b>	<b>100.0%</b>	<b>716</b>	<b>100.0%</b>	<b>693</b>	<b>100.0%</b>	<b>724</b>	<b>100.0%</b>	<b>774</b>	<b>100.0%</b>	<b>767</b>	<b>100.0%</b>	<b>781</b>	<b>100.0%</b>	<b>670</b>	<b>100.0%</b>

**Music Program - Theory/Harmony  
Course and Section Count by Term and Year**

	Fall				Summer				Spring			
	2002	2003	2004	2005	2002	2003	2004	2005	2002	2003	2004	2005
	Section Count	Section Count	Section Count	Section Count	Section Count	Section Count	Section Count	Section Count	Section Count	Section Count	Section Count	Section Count
MUS 1	5	5	5	5	2	2	2	2	5	5	5	5
MUS 10	1	2	2	2	0	0	0	0	1	1	1	1
MUS 11	1	1	1	1	0	0	0	0	1	1	1	1
MUS 12	1	1	1	1	0	0	0	0	0	0	0	0
MUS 14	0	0	0	1	0	0	0	0	0	0	1	0
MUS 15	0	0	0	0	0	0	0	0	1	2	1	2
MUS 92	0	1	1	1	0	0	0	0	0	0	1	1
MUS 93	0	1	1	1	0	0	0	0	0	0	1	1
MUS 117	1	1	1	1	0	0	0	0	0	0	0	0
Total	9	12	12	13	2	2	2	2	8	9	11	11

**Music Program - Theory/Harmony  
C1 Headcount by Course/Term/Year**

	Fall				Summer				Spring			
	2002	2003	2004	2005	2002	2003	2004	2005	2002	2003	2004	2005
	C1 Headcount	C1 Headcount	C1 Headcount	C1 Headcount	C1 Headcount	C1 Headcount	C1 Headcount	C1 Headcount	C1 Headcount	C1 Headcount	C1 Headcount	C1 Headcount
MUS 1	174	178	154	127	71	62	41	20	172	133	133	116
MUS 10	35	56	41	43	.	.	.	.	18	33	24	45
MUS 11	11	16	11	21	.	.	.	.	12	16	25	24
MUS 12	8	11	14	16	.	.	.	.	.	.	.	.
MUS 14	.	.	.	12	.	.	.	.	.	.	16	.
MUS 15	.	.	.	.	.	.	.	.	26	20	29	23
MUS 92	.	0	0	0	.	.	.	.	.	.	0	0
MUS 93	.	0	0	0	.	.	.	.	.	.	0	0
MUS 117	29	21	32	23	.	.	.	.	.	.	.	.
Total	257	282	252	242	71	62	41	20	228	202	227	208

**Music Program - Theory/Harmony**  
**End of Term Enrollment by Course/Term/Year**

	Fall				Summer				Spring			
	2002	2003	2004	2005	2002	2003	2004	2005	2002	2003	2004	2005
	End of Term Enrollment	End of Term Enrollment	End of Term Enrollment	End of Term Enrollment	End of Term Enrollment	End of Term Enrollment	End of Term Enrollment	End of Term Enrollment	End of Term Enrollment	End of Term Enrollment	End of Term Enrollment	End of Term Enrollment
MUS 1	176	180	155	177	74	65	41	100	172	133	133	172
MUS 10	35	56	41	43	0	0	0	0	18	33	24	45
MUS 11	11	17	11	21	0	0	0	0	12	16	25	24
MUS 12	8	11	14	16	0	0	0	0	0	0	0	0
MUS 14	0	0	0	12	0	0	0	0	0	0	16	0
MUS 15	0	0	0	0	0	0	0	0	26	22	29	24
MUS 92	0	19	21	22	0	0	0	0	0	0	20	28
MUS 93	0	11	7	11	0	0	0	0	0	0	12	11
MUS 117	29	21	32	23	0	0	0	0	0	0	0	0
<b>Total</b>	<b>259</b>	<b>315</b>	<b>281</b>	<b>325</b>	<b>74</b>	<b>65</b>	<b>41</b>	<b>100</b>	<b>228</b>	<b>204</b>	<b>259</b>	<b>304</b>

**Music Program - Theory/Harmony  
Courses by Grade/Success/Retention**

		Grades										success	retention	
		A	B	C	CR	D	F	I	NC	W	XX	Total		
		Count	Count	Count	Count	Count	Count	Count	Count	Count	Count	Count	Percent	Percent
2002	Spring	108	30	14	2	4	14	2	0	39	15	228	67.5%	82.9%
	Summ	38	12	1	0	3	2	3	0	9	6	74	68.9%	87.8%
	Fall	95	35	22	0	15	22	1	2	43	24	259	58.7%	83.4%
2003	Spring	80	31	15	2	10	17	4	0	32	13	204	62.7%	84.3%
	Summ	42	3	3	0	2	5	0	1	0	9	65	73.8%	100.0%
	Fall	113	62	32	4	9	23	14	0	39	19	315	67.0%	87.6%
2004	Spring	102	36	18	4	9	35	2	0	37	16	259	61.8%	85.7%
	Summ	20	5	2	1	3	2	0	0	0	8	41	68.3%	100.0%
	Fall	84	58	25	4	14	19	5	4	45	23	281	60.9%	84.0%
2005	Spring	85	56	35	2	7	36	4	0	31	48	304	58.6%	89.8%
	Summ	25	8	2	0	2	5	5	0	5	48	100	35.0%	95.0%
	Fall	92	67	23	4	15	47	9	1	34	33	325	57.2%	89.5%

Grade XX = None of the above/unknown.

Success Rate: Percent of students successful in courses out of total enrolled in courses (RP Group, 1996).

The success rate is calculated by dividing the numerator (number of students duplicated with A, B, C, CR) by the denon

Retention Rate: Percent of students retained in courses out of total students enrolled in courses (RP Group, 1996).

The retention rate is calculated by dividing the numerator (number of students duplicated with A, B, C, D, F, CR, NC, I, NC, W, I, XX).

**Music Program - Theory/Harmony  
All Courses by Grade/Success/Retention**

		Grades											success	retention	
		A	B	C	CR	D	F	I	NC	W	XX	Total			
		Count	Count	Count	Count	Count	Count	Count	Count	Count	Count	Count	Percent	Percent	
MUS 1	2002	Spring	74	25	11	0	2	11	1	0	36	12	172	64.0%	79.1%
		Summe	38	12	1	0	3	2	3	0	9	6	74	68.9%	87.8%
		Fall	72	19	9	0	6	22	0	2	35	11	176	56.8%	80.1%
	2003	Spring	50	17	11	0	7	13	1	0	24	10	133	58.6%	82.0%
		Summe	42	3	3	0	2	5	0	1	0	9	65	73.8%	100.0%
		Fall	67	35	16	1	6	14	4	0	24	13	180	66.1%	86.7%
	2004	Spring	48	20	9	1	4	12	1	0	27	11	133	58.6%	79.7%
		Summe	20	5	2	1	3	2	0	0	0	8	41	68.3%	100.0%
		Fall	40	32	14	2	6	12	1	1	33	14	155	56.8%	78.7%
2005	Spring	48	26	17	1	3	25	0	0	13	39	172	53.5%	92.4%	
	Summe	25	8	2	0	2	5	5	0	5	48	100	35.0%	95.0%	
	Fall	49	27	7	1	7	38	2	0	19	27	177	47.5%	89.3%	
MUS 10	2002	Spring	8	3	2	1	0	2	0	0	1	1	18	77.8%	94.4%
		Fall	8	9	7	0	3	0	0	0	3	5	35	68.6%	91.4%
	2003	Spring	15	8	3	2	0	0	1	0	4	0	33	84.8%	87.9%
		Fall	19	13	6	0	2	2	5	0	4	5	56	67.9%	92.9%
	2004	Spring	5	5	3	1	1	5	0	0	2	2	24	58.3%	91.7%
		Fall	15	6	4	0	3	2	2	0	4	5	41	61.0%	90.2%
	2005	Spring	10	9	8	0	3	7	1	0	5	2	45	60.0%	88.9%
		Fall	10	14	5	0	3	2	0	0	5	4	43	67.4%	88.4%
	MUS 11	2002	Spring	4	2	1	1	2	1	0	0	1	0	12	66.7%
		Fall	2	4	2	0	1	0	0	0	0	2	11	72.7%	100.0%
2003		Spring	3	3	1	0	3	3	2	0	0	1	16	43.8%	100.0%
		Fall	2	5	3	1	1	2	2	0	1	0	17	64.7%	94.1%
2004		Spring	7	5	3	0	2	6	1	0	1	0	25	60.0%	96.0%
		Fall	1	2	1	1	1	1	0	1	2	1	11	45.5%	81.8%
2005		Spring	4	8	3	0	0	2	2	0	4	1	24	62.5%	83.3%
		Fall	4	6	4	0	1	1	2	0	2	1	21	66.7%	90.5%

Grade XX = None of the above/unknown.

Success Rate: Percent of students successful in courses out of total enrolled in courses (RP Group, 1996).

The success rate is calculated by dividing the numerator (number of students duplicated with A, B, C, CR) by the denominator (number of students with /

Retention Rate: Percent of students retained in courses out of total students enrolled in courses (RP Group, 1996).

The retention rate is calculated by dividing the numerator (number of students duplicated with A, B, C, D, F, CR, NC, I\*, XX) by the denominator (numb

**Music Program - Theory/Harmony  
All Courses by Grade/Success/Retention**

		Grades											success	retention
		A	B	C	CR	D	F	I	NC	W	XX	Total		
		Count	Count	Count	Count	Count	Count	Count	Count	Count	Count	Count	Percent	Percent
MUS 12	2002 Fall	3	0	2	0	1	0	1	0	0	1	8	62.5%	100.0%
	2003 Fall	4	2	1	0	0	2	0	0	1	1	11	63.6%	90.9%
	2004 Fall	5	4	0	0	2	1	1	0	0	1	14	64.3%	100.0%
	2005 Fall	3	7	1	1	1	1	1	1	0	0	16	75.0%	100.0%
MUS 14	2004 Spring	4	2	3	0	0	5	0	0	1	1	16	56.2%	93.8%
	2005 Fall	6	1	0	2	2	0	0	0	1	0	12	75.0%	91.7%
MUS 15	2002 Spring	22	0	0	0	0	0	1	0	1	2	26	84.6%	96.2%
	2003 Spring	12	3	0	0	0	1	0	0	4	2	22	68.2%	81.8%
	2004 Spring	20	1	0	0	2	2	0	0	4	0	29	72.4%	86.2%
	2005 Spring	13	1	1	1	0	1	0	0	5	2	24	66.7%	79.2%

Grade XX = None of the above/unknown.

Success Rate: Percent of students successful in courses out of total enrolled in courses (RP Group, 1996).

The success rate is calculated by dividing the numerator (number of students duplicated with A, B, C, CR) by the denominator (number of students with A, B, C,

Retention Rate: Percent of students retained in courses out of total students enrolled in courses (RP Group, 1996).

The retention rate is calculated by dividing the numerator (number of students duplicated with A, B, C, D, F, CR, NC, I\*, XX) by the denominator (number of stu  
XX).

**Music Program - Theory/Harmony  
All Courses by Grade/Success/Retention**

		Grades											success	retention
		A	B	C	CR	D	F	I	NC	W	XX	Total		
		Count	Count	Count	Count	Count	Count	Count	Count	Count	Count	Count	Percent	Percent
MUS 92	2003 Fall	10	2	0	2	0	1	2	0	2	0	19	73.7%	89.5%
	2004 Spring	11	2	0	1	0	3	0	0	2	1	20	70.0%	90.0%
		Fall	6	7	1	0	0	2	1	0	3	1	21	66.7%
	2005 Spring	9	9	4	0	1	0	0	0	4	1	28	78.6%	85.7%
		Fall	8	5	2	0	0	1	3	0	3	0	22	68.2%
MUS 93	2003 Fall	1	2	4	0	0	0	1	0	3	0	11	63.6%	72.7%
	2004 Spring	7	1	0	1	0	2	0	0	0	1	12	75.0%	100.0%
		Fall	1	2	1	0	1	0	0	1	0	1	7	57.1%
	2005 Spring	1	3	2	0	0	1	1	0	0	3	11	54.5%	100.0%
		Fall	4	4	1	0	0	0	1	0	1	0	11	81.8%
MUS 117	2002 Fall	10	3	2	0	4	0	0	0	5	5	29	51.7%	82.8%
	2003 Fall	10	3	2	0	0	2	0	0	4	0	21	71.4%	81.0%
	2004 Fall	16	5	4	1	1	1	0	1	3	0	32	81.3%	90.6%
	2005 Fall	8	3	3	0	1	4	0	0	3	1	23	60.9%	87.0%

Grade XX = None of the above/unknown.

Success Rate: Percent of students successful in courses out of total enrolled in courses (RP Group, 1996).

The success rate is calculated by dividing the numerator (number of students duplicated with A, B, C, CR) by the denominator (number of students with A, B, C, D,

Retention Rate: Percent of students retained in courses out of total students enrolled in courses (RP Group, 1996).

The retention rate is calculated by dividing the numerator (number of students duplicated with A, B, C, D, F, CR, NC, I\*, XX) by the denominator (number of studer  
W, I, XX).

**Music Program - Theory/Harmony  
Gender by Year/Term  
Duplicated Headcount**

		F		M		X		Total	
		Count	Row %	Count	Row %	Count	Row %	Count	Row %
2002	Spring	98	43.0%	130	57.0%	0	.0%	228	100.0%
	Summer	35	47.3%	39	52.7%	0	.0%	74	100.0%
	Fall	84	32.4%	175	67.6%	0	.0%	259	100.0%
2003	Spring	69	33.8%	135	66.2%	0	.0%	204	100.0%
	Summer	30	46.2%	35	53.8%	0	.0%	65	100.0%
	Fall	128	40.6%	186	59.0%	1	.3%	315	100.0%
2004	Spring	91	35.1%	168	64.9%	0	.0%	259	100.0%
	Summer	22	53.7%	19	46.3%	0	.0%	41	100.0%
	Fall	94	33.5%	187	66.5%	0	.0%	281	100.0%
2005	Spring	110	36.2%	194	63.8%	0	.0%	304	100.0%
	Summer	50	50.0%	50	50.0%	0	.0%	100	100.0%
	Fall	96	29.5%	228	70.2%	1	.3%	325	100.0%

**Music Program - Theory/Harmony by Zip Code  
Duplicated Headcount**

		Saddleback Zip		Irvine Zip		Out of District or Missing		Total	
		Count	Row %	Count	Row %	Count	Row %	Count	Row %
2002	Spring	202	88.6%	9	3.9%	17	7.5%	228	100.0%
	Summer	66	89.2%	1	1.4%	7	9.5%	74	100.0%
	Fall	237	91.5%	4	1.5%	18	6.9%	259	100.0%
2003	Spring	186	91.2%	5	2.5%	13	6.4%	204	100.0%
	Summer	59	90.8%	1	1.5%	5	7.7%	65	100.0%
	Fall	283	89.8%	13	4.1%	19	6.0%	315	100.0%
2004	Spring	228	88.0%	18	6.9%	13	5.0%	259	100.0%
	Summer	38	92.7%	1	2.4%	2	4.9%	41	100.0%
	Fall	254	90.4%	12	4.3%	15	5.3%	281	100.0%
2005	Spring	268	88.2%	17	5.6%	19	6.3%	304	100.0%
	Summer	88	88.0%	5	5.0%	7	7.0%	100	100.0%
	Fall	289	88.9%	15	4.6%	21	6.5%	325	100.0%

**Music Program - Theory/Harmony  
Ethnicity by Year/Term  
Duplicated Headcount**

		Ethnic Groups																	
		Asian		African American		Hispanic		American Indian/Alaskan Native		Other		Pacific Islander		White		Unknown		Total	
		Count	Row %	Count	Row %	Count	Row %	Count	Row %	Count	Row %	Count	Row %	Count	Row %	Count	Row %	Count	Row %
2002	Spring	31	13.6%	2	.9%	29	12.7%	2	.9%	3	1.3%	3	1.3%	146	64.0%	12	5.3%	228	00.0%
	Summe	5	6.8%	0	.0%	13	17.6%	0	.0%	1	1.4%	2	2.7%	47	63.5%	6	8.1%	74	00.0%
	Fall	31	12.0%	6	2.3%	24	9.3%	5	1.9%	6	2.3%	6	2.3%	161	62.2%	20	7.7%	259	00.0%
2003	Spring	17	8.3%	9	4.4%	16	7.8%	3	1.5%	4	2.0%	3	1.5%	142	69.6%	10	4.9%	204	00.0%
	Summe	7	10.8%	4	6.2%	8	12.3%	0	.0%	0	.0%	1	1.5%	35	53.8%	10	15.4%	65	00.0%
	Fall	42	13.3%	8	2.5%	31	9.8%	2	.6%	6	1.9%	3	1.0%	194	61.6%	29	9.2%	315	00.0%
2004	Spring	35	13.5%	10	3.9%	24	9.3%	2	.8%	4	1.5%	1	.4%	156	60.2%	27	10.4%	259	00.0%
	Summe	4	9.8%	1	2.4%	5	12.2%	0	.0%	1	2.4%	0	.0%	23	56.1%	7	17.1%	41	00.0%
	Fall	29	10.3%	3	1.1%	40	14.2%	3	1.1%	1	.4%	0	.0%	178	63.3%	27	9.6%	281	00.0%
2005	Spring	21	6.9%	8	2.6%	37	12.2%	1	.3%	3	1.0%	2	.7%	199	65.5%	33	10.9%	304	00.0%
	Summe	18	18.0%	1	1.0%	13	13.0%	0	.0%	2	2.0%	2	2.0%	55	55.0%	9	9.0%	100	00.0%
	Fall	21	6.5%	4	1.2%	40	12.3%	2	.6%	0	.0%	1	.3%	217	66.8%	40	12.3%	325	00.0%

**Music Program - Theory/Harmony  
Educational Goals by Year/Term  
Duplicated Headcount**

	2002				2003				2004				2005			
	Spring		Fall		Spring		Fall		Spring		Fall		Spring		Fall	
	Count	Column %	Count	Column %	Count	Column %	Count	Column %	Count	Column %	Count	Column %	Count	Column %	Count	Column %
AA/AS and transfe	73	32.0%	85	32.8%	59	28.9%	93	29.5%	80	30.9%	95	33.8%	96	31.6%	101	31.1%
Transfer w/o AA/A	23	10.1%	28	10.8%	24	11.8%	38	12.1%	30	11.6%	31	11.0%	34	11.2%	39	12.0%
AA/AS w/o transfe	3	1.3%	3	1.2%	1	.5%	1	.3%	3	1.2%	5	1.8%	2	.7%	5	1.5%
2-yr Voc. w/o trans	10	4.4%	6	2.3%	3	1.5%	11	3.5%	9	3.5%	3	1.1%	7	2.3%	14	4.3%
Voc. certif. w/o tra	19	8.3%	26	10.0%	22	10.8%	36	11.4%	29	11.2%	28	10.0%	39	12.8%	31	9.5%
Discover interests	21	9.2%	21	8.1%	14	6.9%	23	7.3%	17	6.6%	29	10.3%	21	6.9%	20	6.2%
Acquire job skills	20	8.8%	21	8.1%	14	6.9%	24	7.6%	14	5.4%	18	6.4%	13	4.3%	24	7.4%
Update job skills	3	1.3%	4	1.5%	4	2.0%	5	1.6%	6	2.3%	3	1.1%	9	3.0%	7	2.2%
Maintain cert. or lis	0	.0%	1	.4%	1	.5%	2	.6%	0	.0%	1	.4%	1	.3%	1	.3%
Ed. development	34	14.9%	27	10.4%	23	11.3%	42	13.3%	34	13.1%	32	11.4%	27	8.9%	29	8.9%
Basic Skills	1	.4%	2	.8%	2	1.0%	2	.6%	6	2.3%	2	.7%	1	.3%	7	2.2%
HS or GED	0	.0%	1	.4%	2	1.0%	1	.3%	2	.8%	1	.4%	2	.7%	3	.9%
Undecided	21	9.2%	34	13.1%	35	17.2%	36	11.4%	29	11.2%	33	11.7%	52	17.1%	44	13.5%
Unknown	0	.0%	0	.0%	0	.0%	1	.3%	0	.0%	0	.0%	0	.0%	0	.0%
<b>Total</b>	<b>228</b>	<b>100.0%</b>	<b>259</b>	<b>100.0%</b>	<b>204</b>	<b>100.0%</b>	<b>315</b>	<b>100.0%</b>	<b>259</b>	<b>100.0%</b>	<b>281</b>	<b>100.0%</b>	<b>304</b>	<b>100.0%</b>	<b>325</b>	<b>100.0%</b>

**Music Program Total Section Count**

	2002	2003	2004	2005
	Count	Count	Count	Count
Spring	68	69	69	69
Summer	12	8	13	14
Fall	70	70	74	70

**Music Program C1 Headcount**

	2002	2003	2004	2005
	C1 Headcount	C1 Headcount	C1 Headcount	C1 Headcount
Spring	1228	1176	1285	1254
Summer	266	235	200	170
Fall	1266	1341	1300	1264

**Music Program Total End of Term Enrollment**

	2002	2003	2004	2005
	Count	Count	Count	Count
Spring	1669	1624	1808	1871
Summer	464	379	443	528
Fall	1784	1909	1851	1803

**Music Program  
Courses by Grade/Success/Retention**

		Grades										success	retention	
		A	B	C	CR	D	F	I	NC	W	XX	Total		
		Count	Count	Count	Count	Count	Count	Count	Count	Count	Count	Count	Percent	Percent
2002	Spring	646	228	210	24	56	113	11	6	246	129	1669	66.4%	85.3%
	Summer	142	68	29	8	7	39	5	2	69	95	464	53.2%	85.1%
	Fall	653	264	232	23	72	136	5	8	238	153	1784	65.7%	86.7%
2003	Spring	676	253	158	26	68	118	9	3	196	117	1624	68.5%	87.9%
	Summer	149	48	27	7	8	35	3	3	31	68	379	60.9%	91.8%
	Fall	735	304	223	41	66	144	22	8	206	160	1909	68.3%	89.2%
2004	Spring	634	253	227	40	65	154	6	7	215	207	1808	63.8%	88.1%
	Summer	128	53	48	12	11	36	1	3	40	111	443	54.4%	91.0%
	Fall	684	263	240	46	68	122	13	17	231	167	1851	66.6%	87.5%
2005	Spring	701	291	230	64	71	133	9	12	196	164	1871	68.7%	89.5%
	Summer	135	86	52	10	22	23	6	0	53	141	528	53.6%	90.0%
	Fall	630	276	240	49	96	151	26	10	172	153	1803	66.3%	90.5%

Grade XX = None of the above/unknown.

Success Rate: Percent of students successful in courses out of total enrolled in courses (RP Group, 1996).

The success rate is calculated by dividing the numerator (number of students duplicated with A, B, C, CR) by the denominator (number of students with A, E

Retention Rate: Percent of students retained in courses out of total students enrolled in courses (RP Group, 1996).

The retention rate is calculated by dividing the numerator (number of students duplicated with A, B, C, D, F, CR, NC, I, XX) by the denominator (number of CR, NC, W, I, XX).

**Music Program  
Gender by Year/Term  
Duplicated Headcount**

		F		M		X		Total	
		Count	Row %	Count	Row %	Count	Row %	Count	Row %
2002	Spring	825	49.4%	844	50.6%	0	.0%	1669	100.0%
	Summer	263	56.7%	201	43.3%	0	.0%	464	100.0%
	Fall	819	45.9%	965	54.1%	0	.0%	1784	100.0%
2003	Spring	760	46.8%	862	53.1%	2	.1%	1624	100.0%
	Summer	181	47.8%	198	52.2%	0	.0%	379	100.0%
	Fall	905	47.4%	1001	52.4%	3	.2%	1909	100.0%
2004	Spring	821	45.4%	986	54.5%	1	.1%	1808	100.0%
	Summer	251	56.7%	192	43.3%	0	.0%	443	100.0%
	Fall	803	43.4%	1046	56.5%	2	.1%	1851	100.0%
2005	Spring	869	46.4%	1002	53.6%	0	.0%	1871	100.0%
	Summer	280	53.0%	248	47.0%	0	.0%	528	100.0%
	Fall	744	41.3%	1055	58.5%	4	.2%	1803	100.0%

**Music Program by Zip Code  
Duplicated Headcount**

		Saddleback Zip		Irvine Zip		Out of District or Missing		Total	
		Count	Row %	Count	Row %	Count	Row %	Count	Row %
2002	Spring	1501	89.9%	55	3.3%	113	6.8%	1669	100.0%
	Summer	418	90.1%	10	2.2%	36	7.8%	464	100.0%
	Fall	1602	89.8%	56	3.1%	126	7.1%	1784	100.0%
2003	Spring	1465	90.2%	51	3.1%	108	6.7%	1624	100.0%
	Summer	325	85.8%	21	5.5%	33	8.7%	379	100.0%
	Fall	1701	89.1%	73	3.8%	135	7.1%	1909	100.0%
2004	Spring	1624	89.8%	80	4.4%	104	5.8%	1808	100.0%
	Summer	383	86.5%	15	3.4%	45	10.2%	443	100.0%
	Fall	1643	88.8%	76	4.1%	132	7.1%	1851	100.0%
2005	Spring	1638	87.5%	87	4.6%	146	7.8%	1871	100.0%
	Summer	460	87.1%	23	4.4%	45	8.5%	528	100.0%
	Fall	1588	88.1%	71	3.9%	144	8.0%	1803	100.0%

**Music Program  
Ethnicity by Year/Term  
Duplicated Headcount**

		Ethnic Groups																	
		Asian		African American		Hispanic		American Indian/Alaskan Native		Other		Pacific Islander		White		Unknown		Total	
		Count	Row %	Count	Row %	Count	Row %	Count	Row %	Count	Row %	Count	Row %	Count	Row %	Count	Row %	Count	Row %
2002	Spring	181	10.8%	19	1.1%	178	10.7%	12	.7%	17	1.0%	14	.8%	1141	68.4%	107	6.4%	1669	100.0%
	Summer	39	8.4%	8	1.7%	64	13.8%	3	.6%	4	.9%	4	.9%	299	64.4%	43	9.3%	464	100.0%
	Fall	184	10.3%	27	1.5%	175	9.8%	12	.7%	23	1.3%	23	1.3%	1201	67.3%	139	7.8%	1784	100.0%
2003	Spring	183	11.3%	33	2.0%	167	10.3%	13	.8%	20	1.2%	14	.9%	1076	66.3%	118	7.3%	1624	100.0%
	Summer	39	10.3%	13	3.4%	42	11.1%	2	.5%	6	1.6%	2	.5%	234	61.7%	41	10.8%	379	100.0%
	Fall	197	10.3%	43	2.3%	188	9.8%	6	.3%	25	1.3%	19	1.0%	1262	66.1%	169	8.9%	1909	100.0%
2004	Spring	206	11.4%	40	2.2%	195	10.8%	12	.7%	21	1.2%	18	1.0%	1167	64.5%	149	8.2%	1808	100.0%
	Summer	47	10.6%	7	1.6%	62	14.0%	0	.0%	14	3.2%	2	.5%	260	58.7%	51	11.5%	443	100.0%
	Fall	181	9.8%	24	1.3%	212	11.5%	8	.4%	18	1.0%	16	.9%	1219	65.9%	173	9.3%	1851	100.0%
2005	Spring	180	9.6%	25	1.3%	205	11.0%	8	.4%	25	1.3%	10	.5%	1225	65.5%	193	10.3%	1871	100.0%
	Summer	58	11.0%	14	2.7%	70	13.3%	2	.4%	7	1.3%	6	1.1%	321	60.8%	50	9.5%	528	100.0%
	Fall	145	8.0%	41	2.3%	214	11.9%	16	.9%	10	.6%	9	.5%	1192	66.1%	176	9.8%	1803	100.0%

**Music Program  
Educational Goals by Year/Term  
Duplicated Headcount**

	2002				2003				2004				2005			
	Spring		Fall		Spring		Fall		Spring		Fall		Spring		Fall	
	Count	Column %	Count	Column %	Count	Column %	Count	Column %	Count	Column %	Count	Column %	Count	Column %	Count	Column %
AA/AS and trans	450	27.0%	512	28.7%	463	28.5%	562	29.4%	554	30.6%	550	29.7%	524	28.0%	564	31.3%
Transfer w/o AA/	158	9.5%	190	10.7%	168	10.3%	215	11.3%	197	10.9%	197	10.6%	232	12.4%	221	12.3%
AA/AS w/o trans	17	1.0%	15	.8%	8	.5%	9	.5%	12	.7%	15	.8%	9	.5%	12	.7%
2-yr Voc. w/o tra	31	1.9%	26	1.5%	22	1.4%	45	2.4%	32	1.8%	36	1.9%	31	1.7%	46	2.6%
Voc. certif. w/o tr	188	11.3%	193	10.8%	164	10.1%	210	11.0%	210	11.6%	201	10.9%	211	11.3%	168	9.3%
Discover interests	120	7.2%	129	7.2%	88	5.4%	96	5.0%	91	5.0%	111	6.0%	91	4.9%	93	5.2%
Acquire job skills	143	8.6%	132	7.4%	110	6.8%	124	6.5%	121	6.7%	123	6.6%	138	7.4%	116	6.4%
Update job skills	46	2.8%	51	2.9%	39	2.4%	43	2.3%	35	1.9%	25	1.4%	37	2.0%	28	1.6%
Maintain cert. or	5	.3%	5	.3%	8	.5%	7	.4%	5	.3%	8	.4%	6	.3%	5	.3%
Ed. development	290	17.4%	249	14.0%	253	15.6%	312	16.3%	294	16.3%	304	16.4%	317	16.9%	287	15.9%
Basic Skills	7	.4%	9	.5%	22	1.4%	22	1.2%	29	1.6%	28	1.5%	29	1.5%	30	1.7%
HS or GED	12	.7%	16	.9%	21	1.3%	21	1.1%	18	1.0%	18	1.0%	19	1.0%	23	1.3%
Undecided	202	12.1%	256	14.3%	257	15.8%	241	12.6%	210	11.6%	235	12.7%	227	12.1%	209	11.6%
Unknown	0	.0%	1	.1%	1	.1%	2	.1%	0	.0%	0	.0%	0	.0%	1	.1%
<b>Total</b>	<b>1669</b>	<b>100.0%</b>	<b>1784</b>	<b>100.0%</b>	<b>1624</b>	<b>100.0%</b>	<b>1909</b>	<b>100.0%</b>	<b>1808</b>	<b>100.0%</b>	<b>1851</b>	<b>100.0%</b>	<b>1871</b>	<b>100.0%</b>	<b>1803</b>	<b>100.0%</b>

**Other:**

**Requirements for an A.A. degree in music**

In addition to the general education requirements listed in the current Saddleback College catalog, students must complete the following course of study to obtain an A.A. in Music. They MAY NOT obtain a degree by fulfilling Major Requirement No. 2 as listed on pg. 37 of the Saddleback College catalog.

Applied Music (Music 50, 51 or 52): 2 semesters	5 units
Ensemble: 3 semesters (Music 31, 32, 33, 34, 35, 40, 41, 42, 47, 62, 63, 64, 66, 75, 148 or 297)	3-6 units
Music 10	3 units
Music 11	3 units
Music 92	2 units
Music 93	2 units
Two classes from the following: Music 20, 23, 24, 25, 26, 27, 28, 29	6 units
Music 54*	(1) unit
Music 55*	(1) unit
	24-29 units

\* or proficiency exam