

CIRCLES

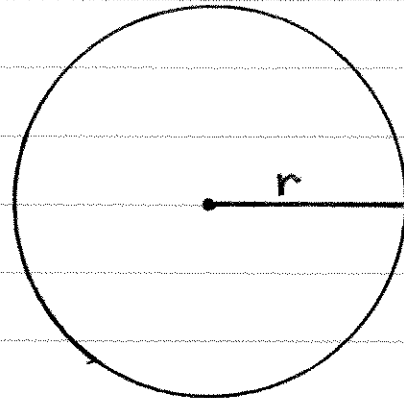
In math, there are numbers that come up so often, we give them their own symbol.

One such "special" number is pi

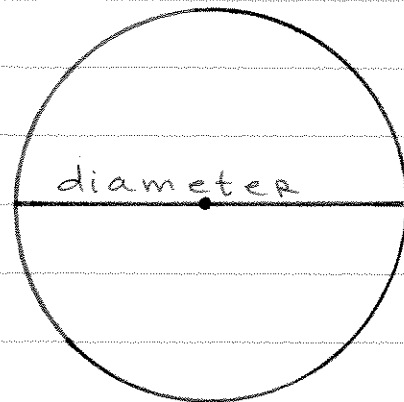
The symbol for pi is π

$$\pi \approx 3.14$$

The radius of a circle is the distance from the center to the edge.



The diameter of a circle is twice the radius
 $d = 2r$



The "perimeter" of a circle is called the _____ and is the distance around the circle.

The formula for the _____ of a circle is:

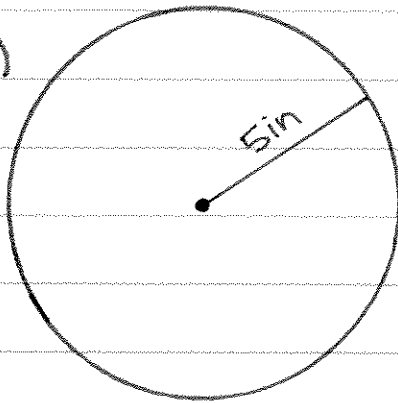
$$C = 2\pi r$$

↳

example 1:

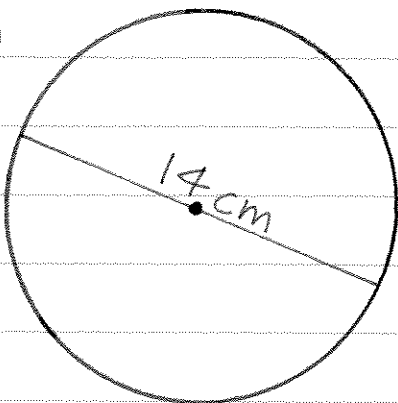
Find the circumference:

a)



C =

b)



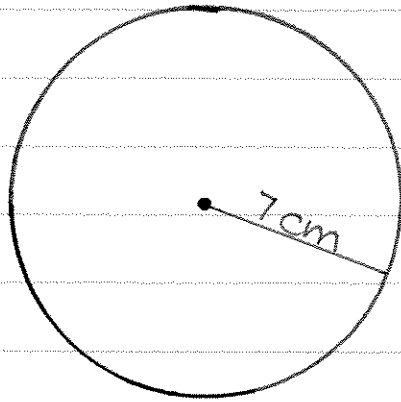
C =

The formula for the AREA of a
CIRCLE is:

$$A = \pi r^2$$

↳ EXAMPLE 2:

FIND the AREA:



A =

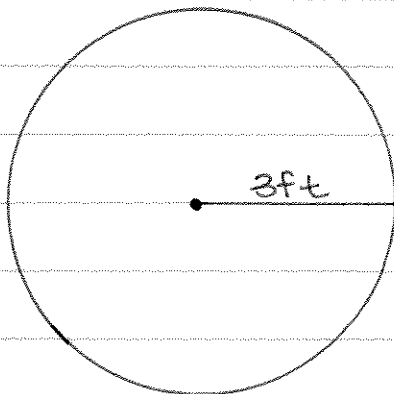
CIRCLES

Practice Problems

Find the circumference AND the area of each circle.

RECALL: $C = 2\pi r$
 $A = \pi r^2$

1.



2.

