



## **Reading Placement** **Nelson-Denny Reading Test**

Your reading placement will be based on how you score on the Nelson-Denny Reading Test. This test is designed to measure reading, vocabulary, reading, comprehension, and reading rate. The test is divided into two sections and each section is timed separately.

### Vocabulary Section – 15 minutes

The vocabulary section of the test contains 80 items and you will have 15 minutes to complete this portion of the test. Questions in the vocabulary section might look like this:

1. An *implausible* agreement would be:  
(a) possible (b) hard to believe (c) imaginary  
(d) historical (e) funny
2. A *calamity* is a: (a) storm (b) party  
(c) conference (d) disaster (e) failure

### Comprehension and Reading Rate Section – 20 minutes.

The comprehension section of the test contains seven reading passages and a total of 38 questions, each with five answer choices. The time limit for this section is 20 minutes. The first minute is used to determine your reading rate. The passages were chosen from Humanities, Science, and Social Science texts. The questions test both your literal and inferential comprehension. A question in the comprehension section might look like this:

1. The chief purpose of this passage is to:  
a. entertain  
b. justify  
c. explain  
d. convince  
e. compare
2. This section is primarily about:  
(five choices would be listed).

## **English Composition Placement** **Accuplacer**

Your English composition placement will be based upon your score on the Accuplacer Test. Part I of the test is designed to measure your ability to recognize sentences free of errors in grammar, punctuation, usage, and syntax. Part II measures your ability to rephrase sentences accurately. You will be given 35 minutes to answer 35 questions.

### Part I

Part I of the test requires you to select the best versions of the underlined part of a sentence. A test question might look like this:

1. When a criminal commits a computer crime, detection may be impossible, however, when a computer crime is detected, prosecution is almost certain.  
a. impossible, however,  
b. impossible; however,  
c. impossible to happen; but  
d. impossible, when

*The correct answer is b.*

### Part II

Part II of the test requires you to rewrite sentences in your head. You'll be given a sentence, followed by the beginning of a rewrite. You must select the correct words and punctuation to follow the rewrite. A test questions might look like this:

1. In spite of its rugged landscape, the Sawtooth Mountain range still attracts thousands of rock climbers each year.

The Sawtooth Mountain range still attracts thousands of rock climbers each year

The next words will be

- a. because of its
- b. nevertheless, it also has its
- c. and it has
- d. even though it has

*The correct answer is d.*

# Mathematics Exam Examples

## Math Diagnostic Testing Project (MDTP)

*revised 1-2010*

There are four math exam levels. You'll be asked to choose one level that is at your skills and abilities that you feel will best challenge your math competency. The results will be used for prerequisite clearance and will not be part of your permanent record. Calculators are not needed and will not be allowed during the test.

### Level 1 - Pre - Algebra Competency

This exam measures how well you understand basic math principles. Examples include addition, subtraction, multiplication, and division of fractions, signed numbers and decimals, as well as solutions of basic algebraic equations. **(50 questions - 45 minutes)**. Possible placements are Math 251 or 351.

#### Integers

- (1) Jim wrote a check for \$318.00. If his balance was then \$2126.00, what was his balance before he wrote this check?  
 A) \$808      B) \$1808      C) \$2444      D) 5306
- (2) What number multiplied by 6 gives -18 as a result?  
 A) -12      B) -3      C) 3      D) -54

#### Decimals

- (3)  $\frac{7.20}{2.4} =$   
 A) 0.03    B) 0.30    C) 3.00    D) 30.0
- (4) Which of the following best approximates  $1.147 - 114.7$   
 A) -100      B) -10      C) 10      D) 100

#### Fractions

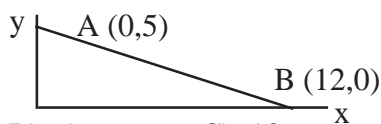
- (5) The ratio of winning tickets to tickets sold in the California Lottery is 2 to 5. If 3,500,000 tickets are sold, how many are "winners"?  
 A) 700,000    B) 750,000    C) 1,400,000    D) 150
- (6)  $\frac{1 + 1/2}{1 - 3/4} =$   
 A) -6    B) -2    C) 2    D) 6

#### Operations

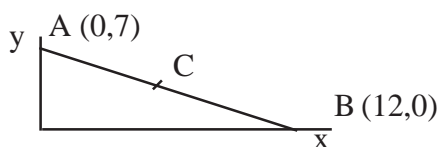
- (7) If in the formula  $p=kt$ ,  $k=36$ , and  $p=144$ , then  $t=$   
 A)  $1/4$       B) 4      C) 12      D) 108
- (8)  $4(b + 2) =$   
 A)  $4b + 2$     B)  $b + 6$     C)  $b + 8$     D)  $4b + 8$

#### Geometry

- (9) In the figure shown, what is the length of segment AB?



- A) -5      B) 5      C) 13      D) 19
- (10) If C is the midpoint of segment AB in the figure shown, then the coordinates of C are  
 A)  $(7/2 * 7/2)$   
 B)  $(6 * 7/2)$   
 C)  $(19/2 * 7/2)$   
 D)  $(19 * 7/2)$



### Level 2 - Elementary Algebra Competency

This exam measures how well you understand the material covered in an elementary algebra course. **(50 questions - 45 minutes)**. Possible placements are Math 253, 205, 251 or take lower test.

#### Arithmetic

- (1)  $(0.12)^2 =$   
 A) 0.00144    B) 0.0144    C) 0.144    D) 0.24

#### Polynomials

- (2) One of the factors of  $x^2 - x - 6$  is  
 A)  $x + 3$       B)  $x + 2$       C)  $x - 1$       D)  $x - 2$

#### Linear Equations and Inequalities

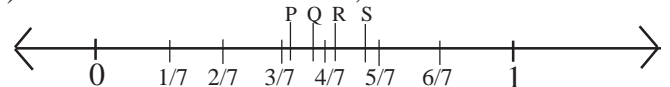
- (3) If  $6x - 3 = 8x - 9$ , then  $x =$   
 A) -6      B) -3      C) 3      D)  $-6/7$

#### Quadratic Equations

- (4) What are the possible values of  $x$  such that  $3x^2 - 2x = 0$   
 A)  $-2/3$  Only    B) 0 Only    C)  $2/3$  Only    D) 0 and  $2/3$

#### Graphing

- (5) On the number line below, which letter best locates  $5/9$



- A) P      B) Q      C) R      D) S

#### Rational Expressions

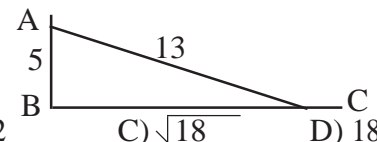
- (6)  $\frac{2}{W+1} - \frac{1}{W-1} =$   
 A)  $1/W+2$     B)  $1/W^2 - 1$     C)  $W - 3/W^2 - 1$

#### Exponents and Square Root

- (7) If  $X > 0$ , then  $\sqrt{64x^{16}} =$   
 A)  $8x^4$       B)  $8x^8$       C)  $16x^4$       D)  $32x^4$

#### Geometry and Measurement

- (8) In the right triangle shown to the right, what is the length of BC?



- A) 8      B) 12      C)  $\sqrt{18}$       D) 18

#### Word Problems

- (9) If  $x$  is to 5 as  $y$  is to 8, what is the value of  $x$  when  $y = 2$ ?  
 A)  $5/16$       B)  $4/5$       C)  $5/4$       D)  $16/5$

Answers to Level 1  
 1) C, 2) B, 3) C, 4) A, 5) C, 6) D, 7) B, 8) D, 9) C, 10) B  
 Answers to Level 2  
 1) B, 2) B, 3) C, 4) D, 5) B, 6) C, 7) B, 8) B, 9) C

# Math Diagnostic Testing Project (MDTP)

## Level 3 - Intermediate Algebra Competency

This exam measures how well you understand the material covered in an intermediate algebra course (**45 questions - 45 minutes**). Possible placements are Math 11, 124, 7, 8, 9, 10, 253, 205 or take lower test.

### Elementary Numeric and Algebraic Operations

(1)  $\frac{c}{d} + 2 =$

- A)  $\frac{c+2d}{d}$     B)  $\frac{c+2}{d+2}$     C)  $\frac{c+2}{d}$     D)  $c + 2d$

### Rational Expressions

(2)  $\frac{c-d}{1/d - 1/c} =$

- A)  $c - d/dc$     B)  $dc/c - d$     C)  $cd$     D)  $-cd$

### Exponents and Radicals

(3)  $\sqrt{3} + \sqrt{27} =$

- A) 6    B)  $3\sqrt{3}$     C)  $4\sqrt{3}$     D)  $10\sqrt{3}$

### Linear Equations; Inequalities; Absolute Value

(4) If  $3x + 2y = 8$  and  $y = x - 1$ , then  $x =$

- A) -6    B) 6/5    C) 7/5    D) 2

### Polynomials; Quadratic Equations

(5) One of the roots of  $(x - 2)(3x + 4) = 0$  is

- A) -2    B) -4/3    C) -3/4    D) 3/4

### The Coordinate Plane and Graphing

(6) Which of the following is an equation of a line slope 3 and a y-intercept -4?  $y =$  \_\_\_\_\_

- A)  $1/3x - 4$     B)  $3x - 4$     C)  $3x + 4$     D)  $4x + 3$

### Functions and Logarithms

(7) if  $\log_{10} x + \log_{10} y = 3$ , then  $xy =$

- A) 0.001    B) 1.0    C) 10    D) 1000

### Word Problems

(8) A student who correctly answered 72 questions on a test received a score of 75%. How many question were on the test?

- A) 54    B) 72    C) 75    D) 96

**Although this is a placement test, to give the student a current reflection of their abilities, no preparation is expected.**

Students may take the same math level to challenge placement after **3 months**.

You may take a different level test with no time restrictions. Read College's catalog for more information.

Answers to Level 3  
1)A, 2)C, 3)C, 4)D, 5)B, 6)B, 7)D, 8)D

## Level 4 - Pre - Calculus Competency

This exam measures how well you understand the material covered in a precalculus course (**40 questions - 60 minutes**). Possible placements are Math 3A, 2 or take lower test.

### Elementary Operations with Numerical and Algebraic Fractions

(1)  $\frac{3x-2}{x+2} - \frac{2}{x-2} =$

- A)  $\frac{3}{x+2}$     B)  $\frac{3x-4}{x^2-4}$     C)  $\frac{3x}{x^2-4}$     D)  $\frac{x(3x-10)}{x^2-4}$

### Operations with Exponents and Radicals

(2)  $\frac{x^{3a+2}}{x^{2a-1}} =$

- A)  $x^{a+3}$     B)  $x^{a-3}$     C)  $x^{5a-1}$     D)  $x^{a+1}$

### Linear Equations and Inequalities

(3) For what value of  $t$  does  $\frac{2t-1}{3t+4} = 2$ ?

- A) -6    B) -9/4    C) 3/2    D) 9/4

### Polynomials and Polynomial Equations

(4) if  $(x - 1)(x^2 - 4) + 2(x - 1)(x + 2) = (x - 1)P$ , then  $P =$

- A)  $x^2 - 2$     B)  $x^2$     C)  $x(x + 2)$     D)  $x^2 + 2$

### Functions

(5) If  $f(x) = 2x + 5$  and  $g(x) = 1 - x^2$ , then  $f(g(2)) =$

- A) -3    B) -1    C) 1    D) 2    E) 9

### Trigonometry

(6) if  $\sin \theta = 3/5$  and  $0 \leq \theta \leq \pi/2$ , then  $\tan \theta =$

- A) 3/2    B) 4/3    C) 5/4    D) 4/5    E) 3/4

### Logarithmic and Exponential Functions

(7)  $\log_3 27 =$

- A) 81    B) 9    C) 3    D) 1/3    E) 1/9

### Word Problems

(8) if  $2/3$  is  $1/2$  of  $4/5$  of a certain number, then that number is

- A)  $15/4$     B)  $5/3$     C)  $5/6$     D)  $5/12$     E)  $4/15$

### Additional suggestions to review math problems

- \* Review math books used for a specific level in the college bookstore.
- \* Ask for Math anxiety video at the library reference desk
- \* Look at GED, CBEST or GRE review books at public bookstores
- \* Ask L.A.P. for help to review, if currently in courses.
- \* **Web Site:** [www.saddleback.edu/matriculation/](http://www.saddleback.edu/matriculation/)

Answers to Level 4  
1)D, 2)A, 3)B, 4)C, 5)B, 6)E, 7)C, 8)B