



SADDLEBACK COLLEGE

MATH ASSESSMENT & PLACEMENT CHART

The First Step To Success In Mathematics

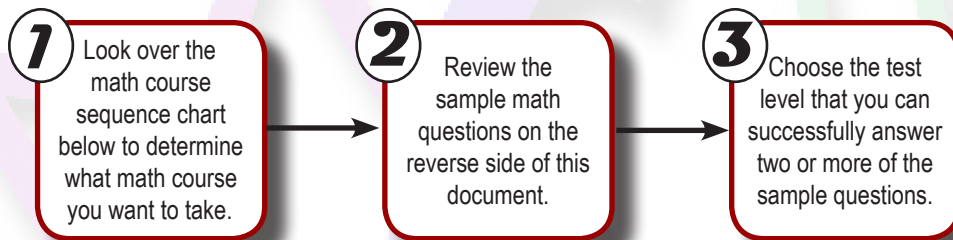
MDTP (MATH DIAGNOSTIC TESTING PROJECT) PLACEMENT EXAM

Purpose:

The purpose of the MDTP exam is to assess your current math skills and place you into the math course for which you are best prepared and in which you have the best chance for success.

Which Test Do I Take?

There are four different levels that you can choose from the Math Diagnostic Testing Project. Each level gives placement into a specific Math course at Saddleback College. If you choose a level that does not provide placement into the course that you desire or if you choose a level that is too hard or too easy, you **may be required** to take a different level exam **before** you can enroll in a Math course.



Test 1: Algebra Readiness Competency

This test covers topics from Pre-Algebra and Algebra 1 A/B including addition, subtraction, multiplication, and division of fractions, signed numbers, and decimals, as well as solutions of basic algebraic equations.

Time: **50 questions - 45 minutes**

Math placement options: **Math 351 or Math 353** (formerly 251)

Test 2: Elementary Algebra Competency

This exam covers topics from Algebra 1 and Algebra 2/Geo including the solutions of linear equations and inequalities, operations with polynomials, and basic geometry.

Time: **50 questions - 45 minutes**

Math placement options: **No Placement, Math 353, 205, 253**

Test 3: Intermediate Algebra Competency

This exam covers topics from Algebra 2, Trigonometry, and Intermediate Algebra including exponential, radical, and logarithmic expressions, functional notation, graphing, and solutions of quadratic equations.

Time: **45 questions - 45 minutes**

Math placement options: **No Placement, Math 205, 253, Math 7, 8, 10, 112, 124 or Math 11**

Other course placements: **ECON, 2 or 4; CHEM 3; PSYC 44**

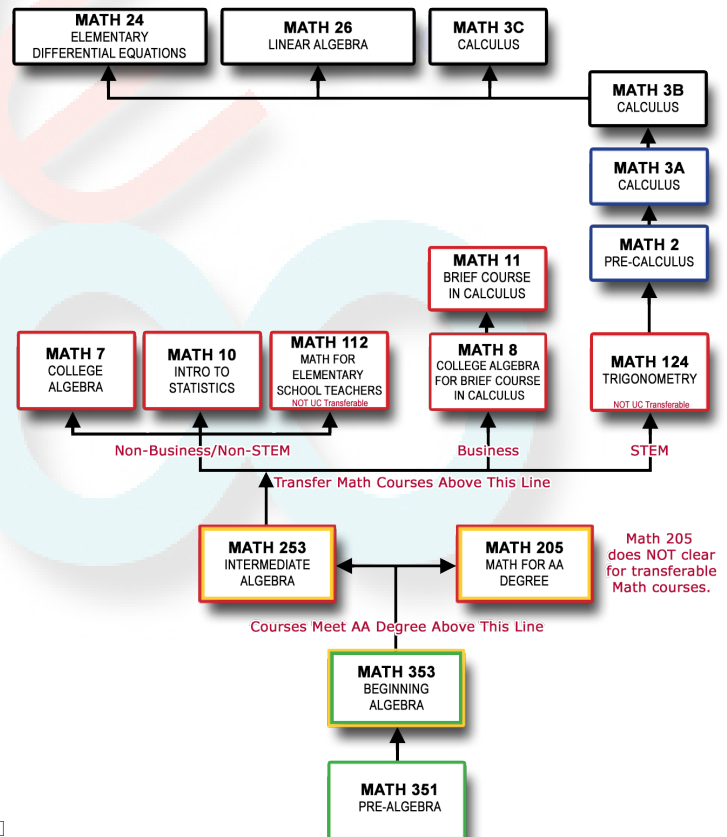
Test 4: Precalculus Competency

This exam covers topics from Math Analysis and Pre-Calculus including polynomials, trigonometric, logarithmic, and exponential functions.

Time: **0 questions - 0 minutes**

Math placement options: **No Placement, Math 2 or Math 3A**

Other course placements: **PHYS 2A; CHEM 1A**



See reverse side for sample questions.

Assessment testing is mandatory for courses listed above Math 351. Please refer to the college catalog for a complete list of offered Mathematics courses.

Answers to sample questions: Test 1: C,D,B Test 2: C,B,B Test 3: C,B,B Test 4: E,C,B

Sample Questions from the four different MDTP math placement exams. (Answers on reverse side)**Calculators** are not permitted, **Cellular phones must be turned off.**Test Levels 1 - 3 are 45 minutes. Test Level 4 is 90 minutes maximum. Extra time is not allowed.**Test Level 1** Math placement: 351 or 353 (formerly 251)

Sample Question #1

$$(7.20) \div (2.4) =$$
 a) 0.03 b) 0.30 c) 3.00 d) 30.0

Sample Question #2

$$\frac{1 + \frac{1}{2}}{1 - \frac{3}{4}} =$$
 a) -6 b) -2 c) 2 d) 6

Sample Question #3

If $p = kt$, $k = 36$ & $p = 144$ then $t =$ a) $\frac{1}{4}$ b) 4 c) 12 d) 108

Test Level 2 Math placement: No Placement, 353 (formerly 251), 205 or 253

Sample Question #1

If $6x - 3 = 8x - 9$, then $x =$ a) -6 b) -3 c) 3 d) $-\frac{6}{7}$ e) $\frac{6}{7}$

Sample Question #2

$$3(x + 5y) - (x - 2y) =$$
 a) $2x + 7y$ b) $2x + 17y$ c) $2x + 3y$ d) $2x + 13y$ e) $4x + 13y$

Sample Question #3

One of the factors of $x^2 - x - 6$ is a) $x + 3$ b) $x + 2$ c) $x - 1$ d) $x - 2$ e) $x - 6$

Test Level 3 Math placement: No Placement, 205, 253, 7, 8, 10, 112, 124, 11

Other course placements: ECON 2, 4; CHEM 3; PSYC 44

Sample Question #1

$$\frac{c - d}{\frac{1}{d} - \frac{1}{c}} =$$
 a) $(c - d)/dc$ b) $dc/(c - d)$ c) dc d) $-dc$ e) $\frac{1}{dc}$

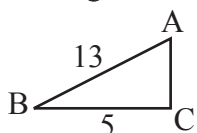
Sample Question #2

Which of the following is an equation of the line with slope 3 and y intercept -4?

a) $y = \frac{1}{3}x - 4$ b) $y = 3x - 4$ c) $y = 3x + 4$ d) $y = 4x - 3$ e) $y = 4x + 3$

Sample Question #3

In the right triangle shown below, what is the length of AC



a) 8 b) 12 c) 18 d) $\sqrt{18}$ e) $\sqrt{194}$

Test Level 4 Math placement: No Placement, 2, 3AOther course placements: PHYS 2A; CHEM 1A **Note: you cannot place into PHYS 4A**

Sample Question #1

If $\sin x = \frac{3}{5}$ and $0 < x < \frac{\pi}{2}$ then $\tan x =$

a) $\frac{3}{2}$ b) $\frac{4}{3}$ c) $\frac{5}{4}$ d) $\frac{4}{5}$ e) $\frac{3}{4}$

Sample Question #2

$$\log_3 27 =$$
 a) 81 b) 9 c) 3 d) $\frac{1}{3}$ e) $\frac{1}{9}$

Sample Question #3

If $f(x) = 2x + 5$ and $g(x) = 1 - x^2$, then $f(g(2)) =$

a) -3 b) -1 c) 1 d) 2 e) 9